

Jahresstatistik der Schweizerischen Rheinhäfen

Rheinhafenverkehr nach Gütergruppen 2014

Ankunftsverkehr nach Gütergruppen
Abgangsverkehr nach Gütergruppen
Grafik Ankunftsverkehr Trocken- und Flüssiggüter
Zufuhr nach Gütergruppen
Abfuhr nach Gütergruppen

SCHWEIZERISCHE RHEINHÄFEN
Ankunftsverkehr nach Gütergruppen

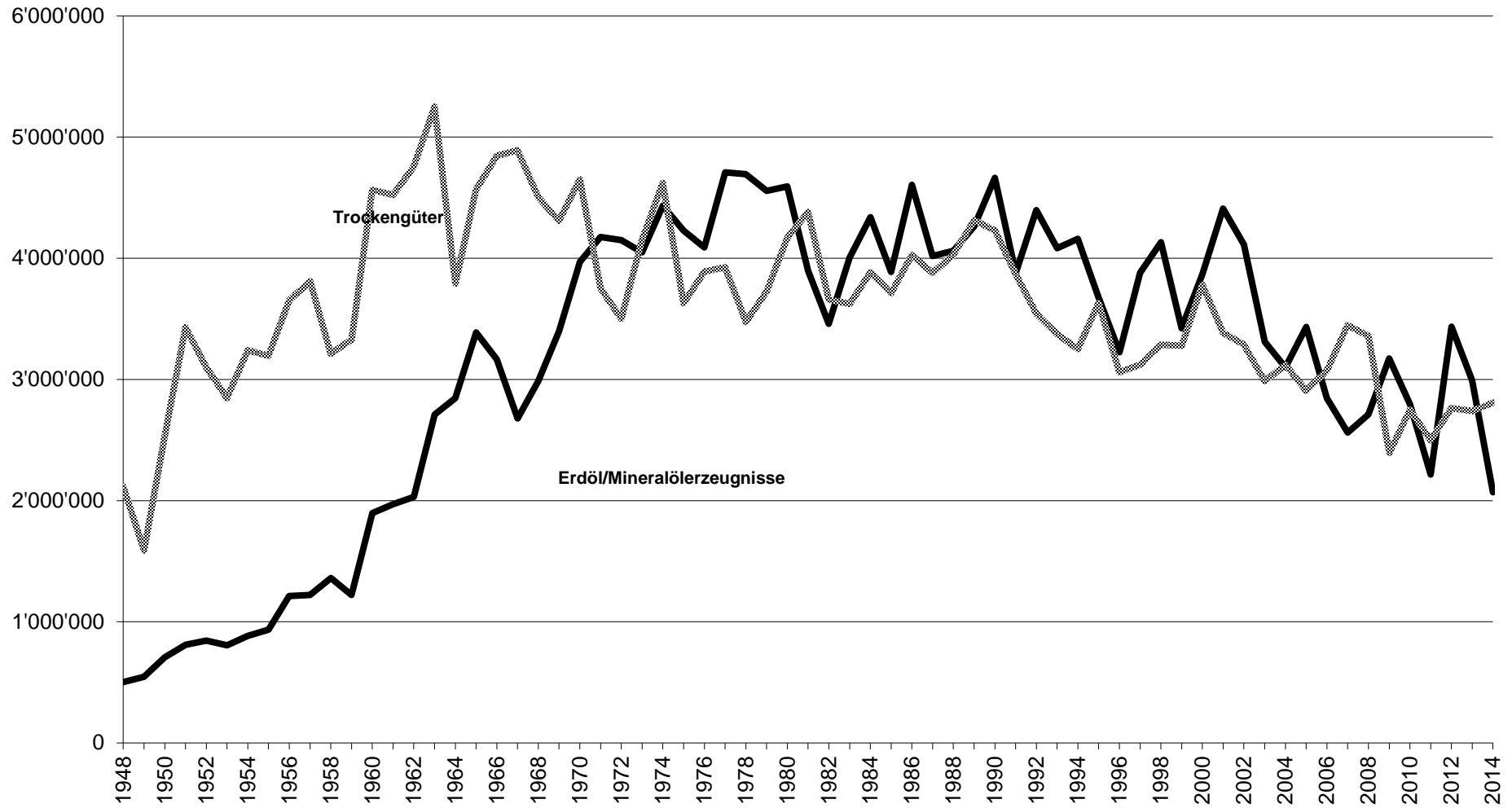
Jahr	Landw. Erzeugn.	Nahrungs- und Futterm.	Feste mineral. Brennst.	Erd-/ Mineralöl-erzeugn.	Erze und Metall- abfälle	Eisen, Stahl, NE-Met.	Steine, Erden, Baustoff.	Dünge-mittel	Chem. Erzeugn.	Fahrzeug. Masch.	Übrige Güter	TOTAL	Trocken- güter
1948		447'982	957'066	502'849							709'965	2'617'862	2'115'013
1949		490'160	675'602	546'001							423'015	2'134'778	1'588'777
1950		617'762	1'085'834	707'027							836'502	3'247'125	2'540'098
1951		589'829	1'959'918	810'074							880'275	4'240'096	3'430'022
1952		606'418	1'663'362	843'899							828'950	3'942'629	3'098'730
1953		626'723	1'321'827	805'975							899'218	3'653'743	2'847'768
1954		562'567	1'663'212	884'206							1'015'640	4'125'625	3'241'419
1955		612'255	1'323'821	935'841							1'259'057	4'130'974	3'195'133
1956		657'494	1'871'689	1'213'275							1'125'565	4'868'023	3'654'748
1957		544'453	2'099'407	1'220'485							1'164'193	5'028'538	3'808'053
1958		581'727	1'556'877	1'360'134							1'074'732	4'573'470	3'213'336
1959		569'946	1'469'698	1'220'528							1'289'065	4'459'237	3'328'709
1960		686'218	1'931'298	1'896'267							1'945'801	6'459'584	4'563'317
1961		635'427	1'520'852	1'969'654							2'367'533	6'493'466	4'523'812
1962		681'719	1'495'526	2'030'975							1'599'438	6'787'583	4'756'608
1963		554'136	1'776'337	2'709'260							1'915'701	7'960'212	5'250'952
1964		69'268	1'049'503	2'845'667							2'009'594	6'638'203	3'792'536
1965		519'335	1'125'145	3'387'980							2'248'005	7'954'214	4'566'234
1966		707'782	845'563	3'166'128							2'319'026	8'012'274	4'846'146
1967		705'706	628'849	2'678'298							2'477'467	7'569'644	4'891'346
1968		512'528	543'220	2'986'079							2'376'800	7'488'800	4'502'721
1969		533'581	418'858	3'397'922							2'318'824	7'707'255	4'309'333
1970		628'936	385'701	3'971'072							2'510'574	8'620'322	4'649'250
1971		634'125	180'273	4'175'660							2'152'225	7'925'510	3'748'850
1972		564'020	143'139	4'149'429							1'895'584	7'651'161	3'501'732
1973		624'592	152'665	4'047'930							2'234'002	8'203'931	4'156'001
1974		724'194	272'162	4'434'513							2'521'247	9'053'560	4'619'047
1975		712'093	143'189	4'228'606							2'089'038	7'859'531	3'630'925
1976		831'558	124'051	4'089'442							1'973'579	7'979'728	3'890'286
1977		894'511	154'341	4'710'147							1'864'295	8'635'818	3'925'671
1978		745'622	152'263	4'694'259							1'740'523	8'169'667	3'475'408
1979		541'669	374'488	4'555'474							1'768'240	8'280'285	3'724'811
1980		462'687	398'003	4'592'385	467'077	1'122'239	552'297				1'167'524	8'762'212	4'169'827
1981		530'247	713'320	3'896'509	548'037	946'250	565'390				1'077'606	8'277'359	4'800'850
1982		510'200	368'010	3'459'909	265'420	895'105	597'591				1'020'876	7'117'111	3'657'202
1983		494'841	280'630	4'005'672	144'480	926'821	649'081				1'128'472	7'629'997	3'624'325
1984		385'857	489'675	4'338'315	192'448	1'071'807	659'304				1'081'761	8'219'167	3'880'852
1985		371'031	374'274	3'887'103	223'035	1'061'934	600'136				1'083'055	7'600'568	3'713'465
1986		451'338	561'401	4'606'677	116'061	1'252'678	521'497				1'122'345	8'631'997	4'025'320
1987		487'317	468'421	4'018'266	42'344	1'136'181	608'368				1'136'239	7'897'136	3'878'870
1988		447'550	369'055	4'062'169	367'300	1'321'684	703'227				1'151'033	8'091'448	4'029'279
1989		375'156	257'451	4'264'064	231'296	1'402'510	865'686				1'181'998	8'578'161	4'314'097
1990		286'542	508'345	4'664'757	131'468	1'409'760	633'200				1'259'152	8'893'224	4'228'467
1991		280'661	340'358	3'878'971	190'355	1'266'753	664'386				1'129'132	7'750'616	3'871'645
1992		267'930	121'550	4'397'692	285'980	1'222'169	715'905	169'835	150'639	9'121	598'024	7'938'845	3'541'153
1993		276'080	136'377	4'082'392	250'601	1'181'609	656'245	186'562	125'261	4'253	558'051	7'457'431	3'375'039
1994	243'668	250'121	148'770	4'161'431	97'229	1'110'802	824'709	173'586	346'576	13'305	42'541	7'412'738	3'251'307
1995	394'261	275'114	209'218	3'673'476	53'153	1'201'720	894'746	174'930	358'875	20'399	48'026	7'303'918	3'630'442
1996	254'439	308'332	153'033	3'224'031	41'234	899'363	784'233	146'765	381'799	34'007	56'160	6'283'396	3'059'365
1997	293'768	286'372	40'919	3'880'892	93'875	1'207'514	609'798	149'647	334'443	37'105	68'110	7'002'443	3'121'551
1998	298506	343'734	61'187	4'133'571	101'797	1'130'600	640'914	144'741	436'243	49'202	79'821	7'420'316	3'286'745
1999	268'740	339'232	54'569	3'423'237	75'275	1'183'367	538'675	155'986	537'581	54'827	70'100	6'701'589	3'278'352
2000	349'658	353'112	247'079	3'870'435	69'726	1'283'723	629'258	152'875	561'905	52'919	81'110	7'651'800	3'781'365
2001	298'782	369'891	165'017	4'410'762	70'569	1'103'140	524'735	165'230	551'622	58'096	78'121	7'795'965	3'385'203
2002	357'119	356'301	116'877	4'114'304	92'709	1'031'548	502'955	159'716	550'425	42'680	77'304	7'401'938	3'287'634
2003	372'776	398'213	87'283	3'309'694	131'300	698'809	411'227	155'098	608'850	49'157	73'892	6'296'299	2'986'605
2004	333'468	357'069	174'487	3'099'977	135'962	727'289	452'590	157'931	645'169	51'204	85'746	6'220'892	3'120'915
2005	205'852	330'906	98'041	3'433'342	78'461	675'295	484'305	185'072	702'114	54'845	92'638	6'340'871	2'907'529
2006	283'573	345'531	144'943	2'846'446	113'357	769'218	438'986	160'596	654'474	74'682	90'483	5'922'289	3'075'843
2007	365'471	448'048	222'185	2'561'276	72'196	837'106	498'265	171'459	660'758	68'907	102'798	6'008'469	3'447'193
2008	366'969	438'275	156'474	2'710'684	55'821	811'766	562'337	148'546	656'472	56'600	106'413	6'070'357	3'359'673
2009	266'689	371'673	176'034	3'172'240	36'445	398'164	393'559	113'294	499'814	55'299	83'450	5'566'661	2'394'421
2010	248'843	382'807	132'642	2'793'331	34'492	624'017	424'913	142'019	566'055	90'416	101'949	5'541'484	2'748'153
2011	337'922	415'357	83'534	2'215'518	31'689	438'210	530'701	124'136	373'550	72'739	90'396	4'713'752	2'498'234
2012	306'095	454'242	104'066	3'436'420	20'629	405'859	863'320	143'338	262'012	96'332	107'482	6'199'795	2'763'375
2013	317'372	492'052	111'711	2'992'663	43'061	349'418	818'317	125'326	261'132	103'467	118'082	5'732'601	2'739'938
2014	302'404	460'027	28'462	2'069'340	60'801	354'737	1'002'562	129'234	235'929	112'255	121'761	4'877'512	2'808'172

SCHWEIZERISCHE RHEINHÄFEN

Abgangsverkehr nach Gütergruppen

Jahr	Landw. Erzeugn.	Nahrungs- und Futterm.	Feste mineral. Brennst.	Erdöl, Mineralöl-Erzeugn.	Erze und Metallabfälle	Eisen, Stahl, NE-Met.	Steine, Erden, Baustoff.	Dünge- mittel	Chem. Erzeugn.	Fahrzeug . Masch.	Übrige Güter	TOTAL	
1948		13'379			58'113				13'292		76'620	161'404	
1949		6'680			31'714				7'654		71'194	117'242	
1950		29'183			73'180				19'914		131'015	253'292	
1951		95'320			161'226				20'386		75'385	352'317	
1952		56'785			157'799				19'167		62'345	296'096	
1953		55'849			106'506				18'377		88'596	269'328	
1954		74'707			171'745				38'213		85'932	370'597	
1955		131'508			145'631				55'543		123'764	456'446	
1956		103'586			189'734				34'740		89'138	417'198	
1957		71'465			194'072				24'893		77'391	367'821	
1958		73'756			118'940				20'014		81'833	294'543	
1959		87'660			84'574				40'702		136'178	349'114	
1960		67'568			222'837				55'506		156'255	502'166	
1961		63'040			119'683				40'023		101'281	324'027	
1962		54'751			75'371				43'360		63'677	293'985	
1963		45'778			93'439				54'529		62'948	320'635	
1964		69'268			65'025				67'807		64'375	397'320	
1965		208'459			103'857				66'453		114'426	661'036	
1966		63'917			32'463				41'908		88'998	394'882	
1967		55'665			14'705				49'250		78'086	342'376	
1968		35'393			13'172				40'619		86'345	319'813	
1969		38'022			12'828				30'473		97'387	309'353	
1970		37'020			20'673				20'343		91'875	304'504	
1971		40'414			17'662				9'062		156'473	276'764	
1972		36'729			14'973				37'737		144'695	274'425	
1973		27'071			14'223				21'769		137'303	244'112	
1974		24'779			21'320				29'800		134'738	286'632	
1975		21'960			17'404				39'489		194'768	329'730	
1976		15'239			20'550				11'153		212'116	312'210	
1977		13'535			19'408				3'437		295'536	372'683	
1978		13'343			23'178				4'322		430'966	682'682	
1979		13'154			26'828				11'175		206'813	301'382	
1980					20'464						48'999	51'831	257'295
1981					29'276						44'127	45'100	258'757
1982					45'924						55'038	48'096	254'081
1983					32'985						44'839	200'513	532'834
1984					35'726						25'912	273'844	552'118
1985					30'132						31'099	221'112	500'642
1986					39'430						25'657	138'804	355'342
1987					50'871						24'537	121'426	310'796
1988					44'394						32'060	184'615	361'344
1989					43'246						26'429	91'688	267'001
1990					45'396						21'492	138'949	301'314
1991					42'451						29'833	413'751	602'785
1992		532	3'410	255'074	36'924	160'769	4'330	4'557	3'652		29'595	93'222	592'065
1993		904	19	410'288	31'339	199'403	1'176	0	8'086		39'835	134'901	825'951
1994	2'365	15'043	19	386'105	37'311	115'393	12'467	5'596	109'314	64'770	45'653	794'036	
1995	3'662	30'629	6'589	226'213	69'603	96'209	12'851	7'945	110'504	104'987	51'984	721'176	
1996	3'204	36'665	3'340	348'239	79'764	85'427	8'655	11'381	131'800	106'954	61'458	876'887	
1997	7'107	46'612	19	186'974	109'199	137'733	6'451	2'423	134'467	133'351	73'150	837'486	
1998	10'300	43'642	0	85'282	64'818	146'179	8'908	10'088	99'168	140'776	79'270	688'431	
1999	4'416	42'557	0	195'681	46'136	131'785	14'798	0	101'069	132'366	77'453	746'261	
2000	9'177	48'758	0	286'812	70'572	120'099	6'186	4'707	129'270	137'445	80'907	893'933	
2001	2'211	38'258	0	232'161	70'876	133'743	421	2'652	150'573	134'629	72'659	838'183	
2002	2'740	38'926	0	201'459	63'734	126'193	1'940	10'315	171'612	160'777	74'999	852'695	
2003	6'627	46'049	0	234'669	39'747	93'734	10'778	6'891	177'656	167'783	90'555	874'489	
2004	17'120	64'443	0	280'177	29'333	105'484	25'425	0	203'231	190'626	108'898	1'024'737	
2005	15'490	73'437	0	173'991	28'779	77'444	67'659	232	196'798	172'381	113'780	919'991	
2006	15'598	72'341	0	181'075	43'791	93'000	14'605	447	119'589	175'271	111'676	827'393	
2007	18'652	95'284	0	255'207	39'840	155'353	9'701	401	196'274	195'455	133'594	1'099'761	
2008	10'725	102'142	25	333'857	36'944	136'824	29'056	0	207'178	163'171	121'983	1'141'905	
2009	7'216	119'809	0	259'473	26'292	75'571	26'896	73	133'529	132'617	95'551	877'027	
2010	6'359	142'789	0	281'694	69'200	76'788	78'692	2'316	73'140	134'912	110'902	976'792	
2011	7'462	91'666	0	264'814	60'284	75'661	136'732	31	134'448	95'340	97'798	964'236	
2012	12'654	69'152	0	152'380	71'587	109'032	204'972	16	123'069	145'618	122'273	1'010'753	
2013	18'087	74'717	0	311'074	89'238	70'541	137'954	39	146'476	130'521	118'436	1'097'083	
2014	25'319	68'403	0	247'516	80'862	72'110	191'548	0	147'290	146'813	124'717	1'104'578	

Ankunftsverkehr Trocken- und Flüssiggüter



Zufuhr	Landw. Erzeugnisse GRUPPE 0		Nahrungs und Futtermittel GRUPPE 1		Feste min. Brennstoffe GRUPPE 2		Erd., Miner., Oel-Erzeugnisse GRUPPE 3		Erzeugnisse Metallabbau GRUPPE 4		Eisen, Stahl, Ne. Met GRUPPE 5	
	2014	2013	2014	2013	2014	2013	2014	2013	2014	2013	2014	2013
Januar	32,108	23,214	43,771	44,365	0	1,045	199,702	268,744	3,880	4,290	31,165	33,092
Februar	48,536	20,955	47,589	31,181	0	2,225	107,877	157,598	7,153	3,415	29,749	34,625
März	18,619	47,589	39,855	39,045	0	3,643	179,432	224,673	6,578	4,133	28,453	36,293
April	23,184	27,117	47,880	35,342	12,462	14,657	99,140	213,409	10,980	8,670	29,802	29,722
Mai	33,361	34,957	25,325	41,714	0	2,552	172,349	264,605	2,801	3,150	36,998	28,002
Juni	19,448	16,350	29,879	29,801	12	8,060	170,238	227,684	1,940	0	31,976	26,350
Juli	19,956	27,079	39,604	42,820	6,579	6,538	174,135	248,230	4,459	2,001	24,400	27,371
August	12,243	6,381	35,738	49,993	2,500	3,284	177,009	233,728	6,641	521	29,862	25,946
September	28,962	15,709	38,982	44,178	1,603	17,741	186,600	209,787	4,104	1,016	34,556	30,236
Oktober	11,702	25,588	37,016	35,969	81	17,006	204,726	379,176	3,687	5,825	26,753	32,164
November	32,118	42,177	42,659	54,131	4,428	14,763	203,984	341,375	3,229	6,188	28,629	28,527
Dezember	22,167	30,256	31,729	43,513	797	20,197	194,148	223,654	5,349	3,852	22,394	17,090
Total	302,404	317,372	460,027	492,052	28,462	111,711	2,069,340	2,992,663	60,801	43,061	354,737	349,418
Zufuhr	Steine, Erden, Baust. GRUPPE 6		Düngemittel GRUPPE 7		Chemische Erzeugnisse GRUPPE 8		Fahrzeuge, Maschinen GRUPPE 9		Übrige Güter GRUPPE 99		Totalverkehr	
	2014	2013	2014	2013	2014	2013	2014	2013	2014	2013	2014	2013
Januar	67,501	35,027	7,209	10,286	20,249	21,997	13,595	10,273	11,401	10,656	430,581	462,989
Februar	83,120	47,817	11,992	4,058	20,213	17,938	10,546	7,971	10,180	8,875	376,955	336,658
März	90,837	61,672	9,194	7,864	15,629	21,138	8,586	10,088	9,166	9,508	406,349	465,646
April	82,181	61,991	2,262	10,768	20,312	24,443	7,483	6,678	9,912	8,913	345,598	441,710
Mai	79,033	63,574	13,053	5,034	21,997	26,156	8,844	8,769	8,979	10,313	402,740	488,826
Juni	94,116	71,071	7,347	3,689	22,732	20,214	9,108	7,758	9,991	9,468	396,787	420,445
Juli	102,376	87,509	10,072	14,471	14,749	23,629	8,797	10,463	16,360	11,519	421,487	501,630
August	67,648	61,335	17,409	14,127	24,189	24,738	10,653	7,607	9,612	9,893	393,504	437,553
September	85,061	76,245	13,919	21,931	20,776	21,116	10,338	9,616	9,968	10,452	434,869	458,027
Oktober	103,051	83,359	14,787	15,133	22,912	19,998	8,400	9,399	8,375	9,892	441,490	633,509
November	85,736	81,690	15,273	12,202	19,964	21,676	6,794	6,980	7,945	9,291	450,759	619,000
Dezember	61,902	87,027	6,717	5,763	12,207	18,089	9,111	7,865	9,872	9,302	376,393	466,608
Total	1,002,562	818,317	129,234	125,326	235,929	261,132	112,255	103,467	121,761	118,082	4,877,512	5,732,601
Zusammenfassung Januar - Dezember												
Total Zufuhr 2014			4,877,512		Total Abfuhr 2014		1,104,578		Totalverkehr 2014		5,982,090	
Total Zufuhr 2013			5,732,601		Total Abfuhr 2013		1,097,083		Totalverkehr 2013		6,829,684	
+/- zum Vergleich in %			-14.92		+/- zum Vorjahr in %		0.68		+/- zum Vergleich in %		-12.41	

Abfuhr	Landw. Erzeugnisse GRUPPE 0		Nahrungs und Futtermittel GRUPPE 1		Feste min. Brennstoffe GRUPPE 2		Erd.,Miner., Oel-Erzeugnisse GRUPPE 3		Erzeugnisse Metallabbau GRUPPE 4		Eisen, Stahl, Ne. Met GRUPPE 5	
	2014	2013	2014	2013	2014	2013	2014	2013	2014	2013	2014	2013
Januar	2,518	2,012	4,757	3,952	0	0	22,377	33,936	6,443	4,831	5,388	3,300
Februar	3,539	870	3,881	6,129	0	0	21,062	29,462	6,142	8,427	5,394	6,471
März	1,774	779	4,358	11,104	0	0	16,466	28,264	5,394	7,128	7,673	4,952
April	790	1,069	5,521	5,104	0	0	14,185	29,774	5,252	10,764	6,216	4,794
Mai	4,771	1,627	6,042	4,184	0	0	17,164	27,242	7,436	5,510	4,502	7,477
Juni	289	1,263	6,117	3,772	0	0	12,766	28,255	5,730	7,126	5,875	9,011
Juli	1,789	1,105	9,751	4,590	0	0	15,323	36,224	4,825	11,460	7,152	5,847
August	241	317	7,327	5,587	0	0	26,253	26,977	7,147	8,323	3,522	5,972
September	1,818	1,048	4,863	5,542	0	0	28,944	17,289	6,501	7,424	2,183	6,936
Oktober	2,632	483	6,349	10,582	0	0	24,591	28,521	6,755	5,957	8,095	6,829
November	2,669	4,961	4,996	8,114	0	0	18,676	17,926	12,617	4,997	7,614	5,428
Dezember	2,489	2,553	4,441	6,057	0	0	29,709	7,204	6,620	7,291	8,496	3,524
Total	25,319	18,087	68,403	74,717	0	0	247,516	311,074	80,862	89,238	72,110	70,541
Abfuhr	Steine, Erden, Baust. GRUPPE 6		Düngemittel GRUPPE 7		Chemische Erzeugnisse GRUPPE 8		Fahrzeuge, Maschinen GRUPPE 9		Übrige Güter GRUPPE 99		Totalverkehr	
	2014	2013	2014	2013	2014	2013	2014	2013	2014	2013	2014	2013
Januar	13,948	6,150	0	0	18,251	8,191	9,875	10,120	8,791	8,218	92,348	80,710
Februar	29,077	7,210	0	0	14,466	10,179	11,954	8,111	8,998	8,987	104,513	85,846
März	17,763	10,848	0	0	12,747	14,732	8,277	13,723	8,864	11,666	83,316	103,196
April	16,936	15,550	0	0	8,990	9,811	12,192	10,113	8,604	9,280	78,686	96,259
Mai	26,415	17,224	0	0	12,145	15,877	11,944	13,186	9,000	10,037	99,419	102,364
Juni	15,024	11,254	0	0	10,726	8,735	17,502	10,276	9,340	7,948	83,369	87,640
Juli	15,208	4,605	0	0	15,310	13,131	14,987	12,631	21,342	10,224	105,687	99,817
August	4,942	14,600	0	19	12,891	11,653	8,919	8,653	8,998	10,161	80,240	92,262
September	4,230	9,731	0	20	14,525	13,083	13,050	9,770	9,726	9,797	85,840	80,640
Oktober	19,555	19,335	0	0	8,827	12,131	13,871	10,575	11,110	11,350	101,785	105,763
November	20,021	10,056	0	0	6,286	15,513	12,029	12,385	10,920	10,756	95,828	90,136
Dezember	8,429	11,391	0	0	12,126	13,440	12,213	10,978	9,024	10,012	93,547	72,450
Total	191,548	137,954	0	39	147,290	146,476	146,813	130,521	124,717	118,436	1,104,578	1,097,083
Zusammenfassung Januar - Dezember												
Total Zufuhr 2014			4,877,512		Total Abfuhr 2014			1,104,578		Totalverkehr 2014		5,982,090
Total Zufuhr 2013			5,732,601		Total Abfuhr 2013			1,097,083		Totalverkehr 2013		6,829,684
+/- zum Vergleich in %			-14.92		+/- zum Vorjahr in %			0.68		+/- zum Vergleich in %		-12.41