

Jahresstatistik der Schweizerischen Rheinhäfen

Rheinhafenverkehr nach Gütergruppen 2017

Ankunftsverkehr nach Gütergruppen
Abgangsverkehr nach Gütergruppen
Grafik Ankunftsverkehr Trocken- und Flüssiggüter
Zufuhr nach Gütergruppen
Abfuhr nach Gütergruppen

SCHWEIZERISCHE RHEINHÄFEN
Ankunftsverkehr nach Gütergruppen

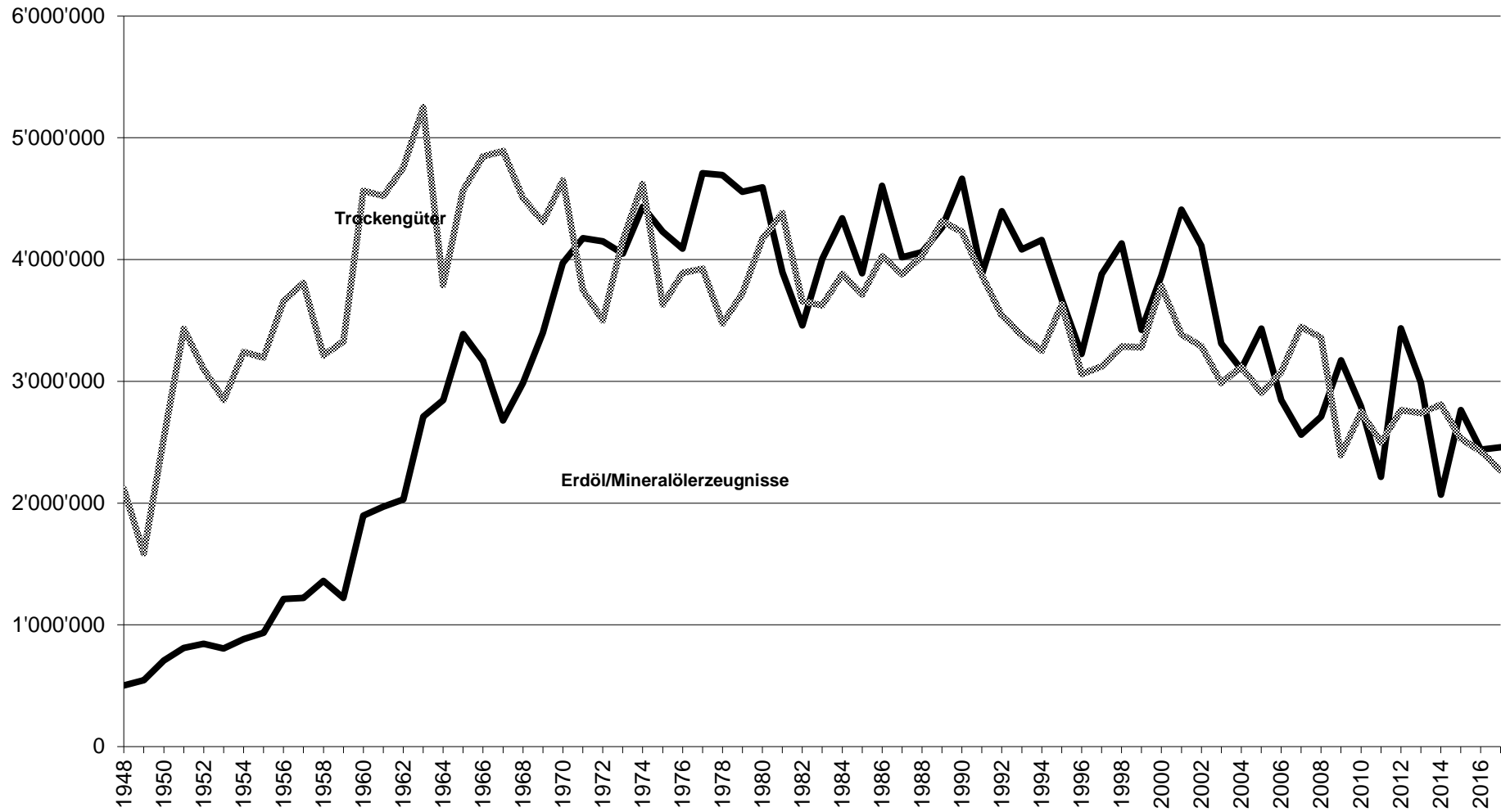
Jahr	Landw. Erzeugn.	Nahrungs- und Futterm.	Feste mineral. Brennst.	Erd-/Mineralöl-erzeugn.	Erze und Metall- abfälle	Eisen, Stahl, NE-Met.	Steine, Erden, Baustoff.	Dünge-mittel	Chem. Erzeugn.	Fahrzeug. Masch.	Übrige Güter	TOTAL	Trocken- güter
1948		447'982	957'066	502'849							709'965	2'617'862	2'115'013
1949		490'160	675'602	546'001							423'015	2'134'778	1'588'777
1950		617'762	1'085'834	707'027							836'502	3'247'125	2'540'098
1951		589'829	1'959'918	810'074							880'275	4'240'096	3'430'022
1952		606'418	1'663'362	843'899							828'950	3'942'629	3'098'730
1953		626'723	1'321'827	805'975							899'218	3'653'743	2'847'768
1954		562'567	1'663'212	884'206							1'015'640	4'125'625	3'241'419
1955		612'255	1'323'821	935'841							1'259'057	4'130'974	3'195'133
1956		657'494	1'871'689	1'213'275							1'125'565	4'868'023	3'654'748
1957		544'453	2'099'407	1'220'485							1'164'193	5'028'538	3'808'053
1958		581'727	1'556'877	1'360'134							1'074'732	4'573'470	3'213'336
1959		569'946	1'469'698	1'220'528							1'289'065	4'549'237	3'328'709
1960		686'218	1'931'298	1'896'267							1'945'801	6'459'584	4'563'317
1961		635'427	1'520'852	1'969'654							2'367'533	6'493'466	4'523'812
1962		681'719	1'495'526	2'030'975		979'925					1'599'438	6'787'583	4'756'608
1963		554'136	1'776'337	2'709'260		1'004'778					1'915'701	7'960'212	5'250'952
1964		69'268	1'049'503	2'845'667		664'171					2'009'594	6'638'203	3'792'536
1965		519'335	1'125'145	3'387'980		673'749					2'248'005	7'954'214	4'566'234
1966		707'782	845'563	3'166'128		973'775					2'319'026	8'012'274	4'846'146
1967		705'706	628'849	2'678'298		1'079'324					2'477'467	7'569'644	4'891'346
1968		512'528	543'220	2'986'079		1'070'173					2'376'800	7'488'800	4'502'721
1969		533'581	418'858	3'397'922		1'038'070					2'318'824	7'707'255	4'309'333
1970		628'936	385'701	3'971'072		1'124'039					2'510'574	8'620'322	4'649'250
1971		634'125	180'273	4'175'660		783'227					2'152'225	7'925'510	3'749'850
1972		564'020	143'139	4'149'429		898'989					1'895'584	7'651'161	3'501'732
1973		624'592	152'665	4'047'930		1'144'742					2'234'002	8'203'931	4'156'001
1974		724'194	272'162	4'434'513		1'101'444					2'521'247	9'053'560	4'619'047
1975		712'093	143'189	4'228'606		686'605					2'089'038	7'859'531	3'630'925
1976		831'558	124'051	4'089'442		961'098					1'973'579	7'979'728	3'890'286
1977		894'511	154'341	4'710'147		1'012'524					1'864'295	8'635'818	3'925'671
1978		745'622	152'263	4'694'259		837'000					1'740'523	8'169'667	3'475'408
1979		541'669	374'488	4'555'474		1'040'414					1'768'240	8'280'285	3'724'811
1980		462'687	398'003	4'592'385	467'077	1'122'239	552'297				1'167'524	8'762'212	4'169'827
1981		530'247	713'320	3'896'509	548'037	946'250	565'390				1'077'606	8'277'359	4'380'850
1982		510'200	368'010	3'459'909	265'420	895'105	597'591				1'020'876	7'117'111	3'657'202
1983		494'841	280'630	4'005'672	144'480	926'821	649'081				1'128'472	7'629'997	3'624'325
1984		385'857	489'675	4'338'315	192'448	1'071'807	659'304				1'081'761	8'219'167	3'880'852
1985		371'031	374'274	3'887'103	223'035	1'061'934	600'136				1'083'055	7'600'568	3'713'465
1986		451'338	561'401	4'606'677	116'061	1'252'678	521'497				1'122'345	8'631'997	4'025'320
1987		487'317	468'421	4'018'266	42'344	1'136'181	608'368				1'136'239	7'897'136	3'878'870
1988		447'550	369'055	4'062'169	36'730	1'321'684	703'227				1'151'033	8'091'448	4'029'279
1989		375'156	257'451	4'264'064	231'296	1'402'510	865'686				1'181'998	8'578'161	4'314'097
1990		286'542	508'345	4'664'757	131'468	1'409'760	633'200				1'259'152	8'893'224	4'228'467
1991		280'661	340'358	3'878'971	190'355	1'266'753	664'386				1'129'132	7'750'616	3'871'645
1992		267'930	121'550	4'397'692	285'980	1'222'169	715'905	169'835	150'639	9'121	598'024	7'938'845	3'541'153
1993		276'080	136'377	4'082'392	250'601	1'181'609	656'245	186'562	125'261	4'253	558'051	7'457'431	3'375'039
1994	243'668	250'121	148'770	4'161'431	97'229	1'110'802	824'709	173'586	346'576	13'305	42'541	7'412'738	3'251'307
1995	394'261	275'114	209'218	3'673'476	53'153	1'201'720	894'746	174'930	358'875	20'399	48'026	7'303'918	3'630'442
1996	254'439	308'332	153'033	3'224'031	41'234	899'363	784'233	146'765	381'799	34'007	56'160	6'283'396	3'059'365
1997	293'768	286'372	40'919	3'880'892	93'875	1'207'514	609'798	149'647	334'443	37'105	68'110	7'002'443	3'121'551
1998	298'506	343'734	61'187	4'133'571	101'797	1'130'600	640'914	144'741	436'243	49'202	79'821	7'420'316	3'286'745
1999	268'740	339'232	54'569	3'423'237	75'275	1'183'367	538'675	155'986	537'581	54'827	70'100	6'701'589	3'278'352
2000	349'658	353'112	247'079	3'870'435	69'726	1'283'723	629'258	152'875	561'905	52'919	81'110	7'651'800	3'781'365
2001	298'782	369'891	165'017	4'410'762	70'569	1'103'140	524'735	165'230	551'622	58'096	78'121	7'795'965	3'385'203
2002	357'119	356'301	116'877	4'114'304	92'709	1'031'548	502'955	159'716	550'425	42'680	77'304	7'401'938	3'287'634
2003	372'776	398'213	87'283	3'309'694	131'300	698'809	411'227	155'098	608'850	49'157	73'892	6'296'299	2'986'605
2004	333'468	357'069	174'487	3'099'977	135'962	727'289	452'590	157'931	645'169	51'204	85'746	6'220'892	3'120'915
2005	205'852	330'906	98'041	3'433'342	78'461	675'295	484'305	185'072	702'114	54'845	92'638	6'340'871	2'907'529
2006	283'573	345'531	144'943	2'846'446	113'357	769'218	438'986	160'596	654'474	74'682	90'483	5'922'289	3'075'843
2007	365'471	448'048	222'185	2'561'276	72'196	837'106	498'265	171'459	660'758	68'907	102'798	6'008'469	3'447'193
2008	366'969	438'275	156'474	2'710'684	55'821	811'766	562'337	148'546	656'472	56'600	106'413	6'070'357	3'359'673
2009	266'689	371'673	176'034	3'172'240	36'445	398'164	393'559	113'294	499'814	55'299	83'450	5'566'661	2'394'421
2010	248'843	382'807	132'642	2'793'331	34'492	624'017	424'913	142'019	566'055	90'416	101'949	5'541'484	2'748'153
2011	337'922	415'357	83'534	2'215'518	31'689	438'210	530'701	124'136	373'550	72'739	90'396	4'713'752	2'498'234
2012	306'095	454'242	104'066	3'436'420	20'629	405'859	863'320	143'338	262'012	96'332	107'482	6'199'795	2'763'375
2013	317'372	492'052	111'711	2'992'663	43'061	349'418	818'317	125'326	261'132	103'467	118'082	5'732'601	2'739'938
2014	302'404	460'027	28'462	2'069'340	60'801	354'737	1'002'562	129'234	235'929	112'255	121'761	4'877'512	2'808'172
2015	268'837	450'466	65'035	2'764'242	69'309	332'869	806'832	116'680	199'129	104'221	116'964	5'294'584	2'530'342
2016	309'109	428'565	31'175	2'438'441	31'717	289'068	784'550	124'993	201'327	99'528	124'345	4'862'818	2'424'377
2017	234'137	409'937	37'815	2'457'975	12'627	314'483	704'561	124'696	184'895	111'168	136'837	4'729'131	2'271'156

SCHWEIZERISCHE RHEINHÄFEN

Abgangsverkehr nach Gütergruppen

Jahr	Landw. Erzeugn.	Nahrungs- und Futterm.	Feste mineral. Brennst.	Erdöl, Mineralöl-Erzeugn.	Erze und Metallabfälle	Eisen, Stahl, NE-Met.	Steine, Erden, Baustoff.	Düngemittel	Chem. Erzeugn.	Fahrzeug . Masch.	Übrige Güter	TOTAL
1948		13'379			58'113				13'292		76'620	161'404
1949		6'680			31'714				7'654		71'194	117'242
1950		29'183			73'180				19'914		131'015	253'292
1951		95'320			161'226				20'386		75'385	352'317
1952		56'785			157'799				19'167		62'345	296'096
1953		55'849			106'506				18'377		88'596	269'328
1954		74'707			171'745				38'213		85'932	370'597
1955		131'508			145'631				55'543		123'764	456'446
1956		103'586			189'734				34'740		89'138	417'198
1957		71'465			194'072				24'893		77'391	367'821
1958		73'756			118'940				20'014		81'833	294'543
1959		87'660			84'574				40'702		136'178	349'114
1960		67'568			222'837				55'506		156'255	502'166
1961		63'040			119'683				40'023		101'281	324'027
1962		54'751			75'371				43'360	56'826	63'677	293'985
1963		45'778			93'439				54'529	63'941	62'948	320'635
1964		69'268			65'025				67'807	130'845	64'375	397'320
1965		208'459			103'857				66'453	167'841	114'426	661'036
1966		63'917			32'463				41'908	167'596	88'998	394'882
1967		55'665			14'705				49'250	144'670	78'086	342'376
1968		35'393			13'172				40'619	144'284	86'345	319'813
1969		38'022			12'828				30'473	130'643	97'387	309'353
1970		37'020			20'673				20'343	134'593	91'875	304'504
1971		40'414			17'662				9'062	156'473	53'153	276'764
1972		36'729			14'973				37'737	144'695	40'291	274'425
1973		27'071			14'223				21'769	137'303	43'746	244'112
1974		24'779			21'320				29'800	134'738	75'995	286'632
1975		21'960			17'404				39'489	194'768	56'109	329'730
1976		15'239			20'550				11'153	212'116	53'152	312'210
1977		13'535			19'408				3'437	295'536	40'767	372'683
1978		13'343			23'178				4'322	430'966	44'873	516'682
1979		13'154			26'828				11'175	206'813	43'412	301'382
1980					20'464					48'999	51'831	257'295
1981					29'276					44'127	45'100	258'757
1982					45'924					55'038	48'096	254'081
1983					32'985					44'839	200'513	532'834
1984					35'726					25'912	273'844	552'118
1985					30'132					31'099	221'112	500'642
1986					39'430					25'657	138'804	355'342
1987					50'871					24'537	121'426	310'796
1988					44'394					32'060	184'615	361'344
1989					43'246					26'429	91'688	267'001
1990					45'396					21'492	138'949	301'314
1991					42'451					29'833	413'751	602'785
1992		532	3'410	255'074	36'924	160'769	4'330	4'557	3'652	29'595	93'222	592'065
1993		904	19	410'288	31'339	199'403	1'176	0	8'086	39'835	134'901	825'951
1994	2'365	15'043	19	386'105	37'311	115'393	12'467	5'596	109'314	64'770	45'653	794'036
1995	3'662	30'629	6'589	226'213	69'603	96'209	12'851	7'945	110'504	104'987	51'984	721'176
1996	3'204	36'665	3'340	348'239	79'764	85'427	8'655	11'381	131'800	106'954	61'458	876'887
1997	7'107	46'612	19	186'974	109'199	137'733	6'451	2'423	134'467	133'351	73'150	837'486
1998	10'300	43'642	0	85'282	64'818	146'179	8'908	10'088	99'168	140'776	79'270	688'431
1999	4'416	42'557	0	195'681	46'136	131'785	14'798	0	101'069	132'366	77'453	746'261
2000	9'177	48'758	0	286'812	70'572	120'099	6'186	4'707	129'270	137'445	80'907	893'933
2001	2'211	38'258	0	232'161	70'876	133'743	421	2'652	150'573	134'629	72'659	838'183
2002	2'740	38'926	0	201'459	63'734	126'193	1'940	10'315	171'612	160'777	74'999	852'695
2003	6'627	46'049	0	234'669	39'747	93'734	10'778	6'891	177'656	167'783	90'555	874'489
2004	17'120	64'443	0	280'177	29'333	105'484	25'425	0	203'231	190'626	108'898	1'024'737
2005	15'490	73'437	0	173'991	28'779	77'444	67'659	232	196'798	172'381	113'780	919'991
2006	15'598	72'341	0	181'075	43'791	93'000	14'605	447	119'589	175'271	111'676	827'393
2007	18'652	95'284	0	255'207	39'840	155'353	9'701	401	196'274	195'455	133'594	1'099'761
2008	10'725	102'142	25	333'857	36'944	136'824	29'056	0	207'178	163'171	121'983	1'141'905
2009	7'216	119'809	0	259'473	26'292	75'571	26'896	73	133'529	132'617	95'551	877'027
2010	6'359	142'789	0	281'694	69'200	76'788	78'692	2'316	73'140	134'912	110'902	976'792
2011	7'462	91'666	0	264'814	60'284	75'661	136'732	31	134'448	95'340	97'798	964'236
2012	12'654	69'152	0	152'380	71'587	109'032	204'972	16	123'069	145'618	122'273	1'010'753
2013	18'087	74'717	0	311'074	89'238	70'541	137'954	39	146'476	130'521	118'436	1'097'083
2014	25'319	68'403	0	247'516	80'862	72'110	191'548	0	147'290	146'813	124'717	1'104'578
2015	32'585	62'097	22	281'117	62'932	52'361	177'069	2	128'644	131'333	111'092	1'039'254
2016	36'304	89'767	0	211'000	75'568	41'058	141'256	1'311	144'951	156'419	136'051	1'033'685
2017	50'012	90'733	0	160'235	84'248	41'952	179'437	207	159'551	153'850	140'798	1'061'023

Ankunftsverkehr Trocken- und Flüssiggüter



Zufuhr	Landw. Erzeugnisse GRUPPE 0		Nahrungs und Futtermittel GRUPPE 1		Feste min. Brennstoffe GRUPPE 2		Erd.,Miner., Oel-Erzeugnisse GRUPPE 3		Erzeugnisse Metallabbau GRUPPE 4		Eisen, Stahl, Ne. Met GRUPPE 5	
	2017	2016	2017	2016	2017	2016	2017	2016	2017	2016	2017	2016
Januar	9,106	49,527	23,061	52,151	0	0	105,802	318,578	800	2,035	10,043	23,807
Februar	21,426	34,305	27,208	40,931	0	0	147,062	172,704	9	5,048	24,199	29,812
März	29,453	24,780	35,309	40,919	4,728	3,763	257,077	226,816	3,000	3,876	31,742	21,896
April	22,874	30,535	32,777	27,941	0	8,897	170,152	233,704	0	11,115	16,959	32,865
Mai	17,557	11,487	37,024	40,784	3,883	7,775	253,054	229,709	0	4,111	34,547	21,703
Juni	18,504	19,131	27,869	27,627	4,429	0	273,468	170,351	0	3,236	24,362	27,465
Juli	21,898	25,657	41,198	35,904	11	1,582	194,760	269,624	0	5	23,829	24,136
August	21,094	17,626	38,261	43,152	8,336	2,475	252,808	183,231	2,020	151	26,459	27,699
September	22,025	17,364	29,338	24,297	11	33	226,853	182,257	4,528	2,120	40,655	24,946
Oktober	10,338	16,592	41,839	36,167	3,175	18	162,568	140,339	2,254	20	35,887	18,676
November	15,020	32,010	32,485	25,909	8,792	6,632	180,711	174,847	16	0	29,983	22,592
Dezember	24,842	30,095	43,568	32,783	4,450	0	233,660	136,281	0	0	15,818	13,471
Total	234,137	309,109	409,937	428,565	37,815	31,175	2,457,975	2,438,441	12,627	31,717	314,483	289,068
Zufuhr	Steine, Erden, Baust. GRUPPE 6		Düngemittel GRUPPE 7		Chemische Erzeugnisse GRUPPE 8		Fahrzeuge, Maschinen GRUPPE 9		Übrige Güter GRUPPE 99		Totalverkehr	
	2017	2016	2017	2016	2017	2016	2017	2016	2017	2016	2017	2016
Januar	15,023	49,856	9,610	13,977	8,570	13,237	8,945	11,026	8,461	11,127	199,421	545,321
Februar	46,204	63,880	7,974	9,897	12,597	23,658	7,471	10,063	8,101	10,610	302,251	400,908
März	59,369	64,327	7,731	2,914	19,477	11,612	8,396	9,553	9,797	11,693	466,079	422,149
April	53,024	69,460	9,668	7,476	11,161	20,891	7,542	8,169	9,480	9,660	333,637	460,713
Mai	60,063	65,148	7,223	12,340	16,073	24,927	9,692	9,458	11,150	10,183	450,266	437,625
Juni	67,207	74,606	863	6,682	16,998	16,309	6,773	7,468	10,351	8,095	450,824	360,970
Juli	65,631	79,179	11,457	7,903	12,555	17,804	5,545	9,972	9,378	12,002	386,262	483,768
August	70,241	67,638	15,810	8,732	20,442	18,254	12,663	9,141	15,576	13,358	483,710	391,457
September	84,091	70,218	15,385	10,666	20,093	15,612	14,029	8,568	16,628	12,026	473,636	368,107
Oktober	66,300	68,655	12,752	16,017	17,397	11,355	13,322	6,252	14,754	8,124	380,586	322,215
November	70,174	74,474	20,028	22,625	13,198	13,844	8,366	4,712	12,277	9,734	391,050	387,379
Dezember	47,234	37,109	6,195	5,764	16,334	13,824	8,424	5,146	10,884	7,733	411,409	282,206
Total	704,561	784,550	124,696	124,993	184,895	201,327	111,168	99,528	136,837	124,345	4,729,131	4,862,818
Zusammenfassung Januar - Dezember												
Total Zufuhr 2017			4,729,131		Total Abfuhr 2017		1,061,023		Totalverkehr 2017		5,790,154	
Total Zufuhr 2016			4,862,818		Total Abfuhr 2016		1,033,685		Totalverkehr 2016		5,896,503	
+/- zum Vergleich in %			-2.75		+/- zum Vorjahr in %		2.58		+/- zum Vergleich in %		-1.80	

Abfuhr	Landw. Erzeugnisse GRUPPE 0		Nahrungs und Futtermittel GRUPPE 1		Feste min. Brennstoffe GRUPPE 2		Erd.,Miner., Oel-Erzeugnisse GRUPPE 3		Erzeugnisse Metallabbau GRUPPE 4		Eisen, Stahl, Ne. Met GRUPPE 5		
	2017	2016	2017	2016	2017	2016	2017	2016	2017	2016	2017	2016	
Januar	226	4,788	3,778	7,535	0	0	6,917	35,326	5,651	26	3,834	8,451	
Februar	1,842	4,231	5,533	8,146	0	0	7,792	29,068	9,458	5,395	4,481	932	
März	3,821	4,515	4,375	6,208	0	0	24,556	24,263	5,855	3,792	1,899	4,409	
April	3,514	6,163	4,979	9,976	0	0	10,875	27,955	5,931	9,509	2,266	2,368	
Mai	5,073	4,007	5,804	10,133	0	0	11,922	16,775	8,784	4,491	5,258	1,447	
Juni	11,981	1,430	7,729	6,930	0	0	5,064	14,075	6,961	7,987	3,272	2,871	
Juli	4,726	2,046	6,775	9,902	0	0	9,033	14,014	8,013	11,160	1,126	6,246	
August	745	362	10,320	7,548	0	0	16,923	10,658	6,159	7,150	504	2,433	
September	4,163	3,357	13,381	6,239	0	0	20,094	8,495	10,731	9,147	4,981	1,713	
Oktober	3,360	2,622	9,392	5,516	0	0	16,077	9,316	5,987	4,364	1,770	3,419	
November	3,999	1,515	8,640	5,914	0	0	17,268	9,760	4,036	5,536	3,295	4,432	
Dezember	6,562	1,268	10,027	5,720	0	0	13,714	11,295	6,682	7,011	9,266	2,337	
Total	50,012	36,304	90,733	89,767	0	0	160,235	211,000	84,248	75,568	41,952	41,058	
Abfuhr	Steine, Erden, Baust. GRUPPE 6		Düngemittel GRUPPE 7		Chemische Erzeugnisse GRUPPE 8		Fahrzeuge, Maschinen GRUPPE 9		Übrige Güter GRUPPE 99		Totalverkehr		
	2017	2016	2017	2016	2017	2016	2017	2016	2017	2016	2017	2016	
Januar	1,336	13,940	0	0	7,082	8,957	5,083	7,718	5,978	9,279	39,885	96,020	
Februar	6,226	14,271	0	0	14,952	12,318	7,210	12,983	6,861	11,352	64,355	98,696	
März	22,625	16,485	0	0	11,382	12,826	13,490	12,471	9,948	11,377	97,951	96,346	
April	17,606	27,018	0	0	12,819	11,801	10,925	17,748	9,615	12,578	78,530	125,116	
Mai	19,055	23,257	0	0	10,765	15,759	11,188	14,817	9,977	11,490	87,826	102,176	
Juni	16,343	7,550	38	359	9,298	12,393	11,062	11,000	12,372	8,820	84,120	73,415	
Juli	11,955	10,956	22	9	14,302	13,902	14,268	16,773	11,388	15,993	81,608	101,001	
August	11,008	6,576	126	0	13,809	11,021	13,745	14,292	13,192	12,886	86,531	72,926	
September	14,941	4,111	21	0	20,335	12,318	19,797	16,706	18,559	12,532	127,003	74,618	
Oktober	17,357	5,159	0	914	16,111	12,267	15,300	7,974	14,983	11,422	100,337	62,973	
November	16,819	9,488	0	29	15,529	11,016	17,982	13,098	14,546	10,258	102,114	71,046	
Dezember	24,166	2,445	0	0	13,167	10,373	13,800	10,839	13,379	8,064	110,763	59,352	
Total	179,437	141,256	207	1,311	159,551	144,951	153,850	156,419	140,798	136,051	1,061,023	1,033,685	
Zusammenfassung Januar - Dezember													
Total Zufuhr 2017			4,729,131		Total Abfuhr 2017			1,061,023		Totalverkehr 2017		5,790,154	
Total Zufuhr 2016			4,862,818		Total Abfuhr 2016			1,033,685		Totalverkehr 2016		5,896,503	
+/- zum Vergleich in %			-2.75		+/- zum Vorjahr in %			2.58		+/- zum Vergleich in %		-1.80	