

Jahresstatistik der Schweizerischen Rheinhäfen

# Rheinhafenverkehr nach Gütergruppen 2016

Ankunftsverkehr nach Gütergruppen  
Abgangsverkehr nach Gütergruppen  
Grafik Ankunftsverkehr Trocken- und Flüssiggüter  
Zufuhr nach Gütergruppen  
Abfuhr nach Gütergruppen

SCHWEIZERISCHE RHEINHÄFEN  
Ankunftsverkehr nach Gütergruppen

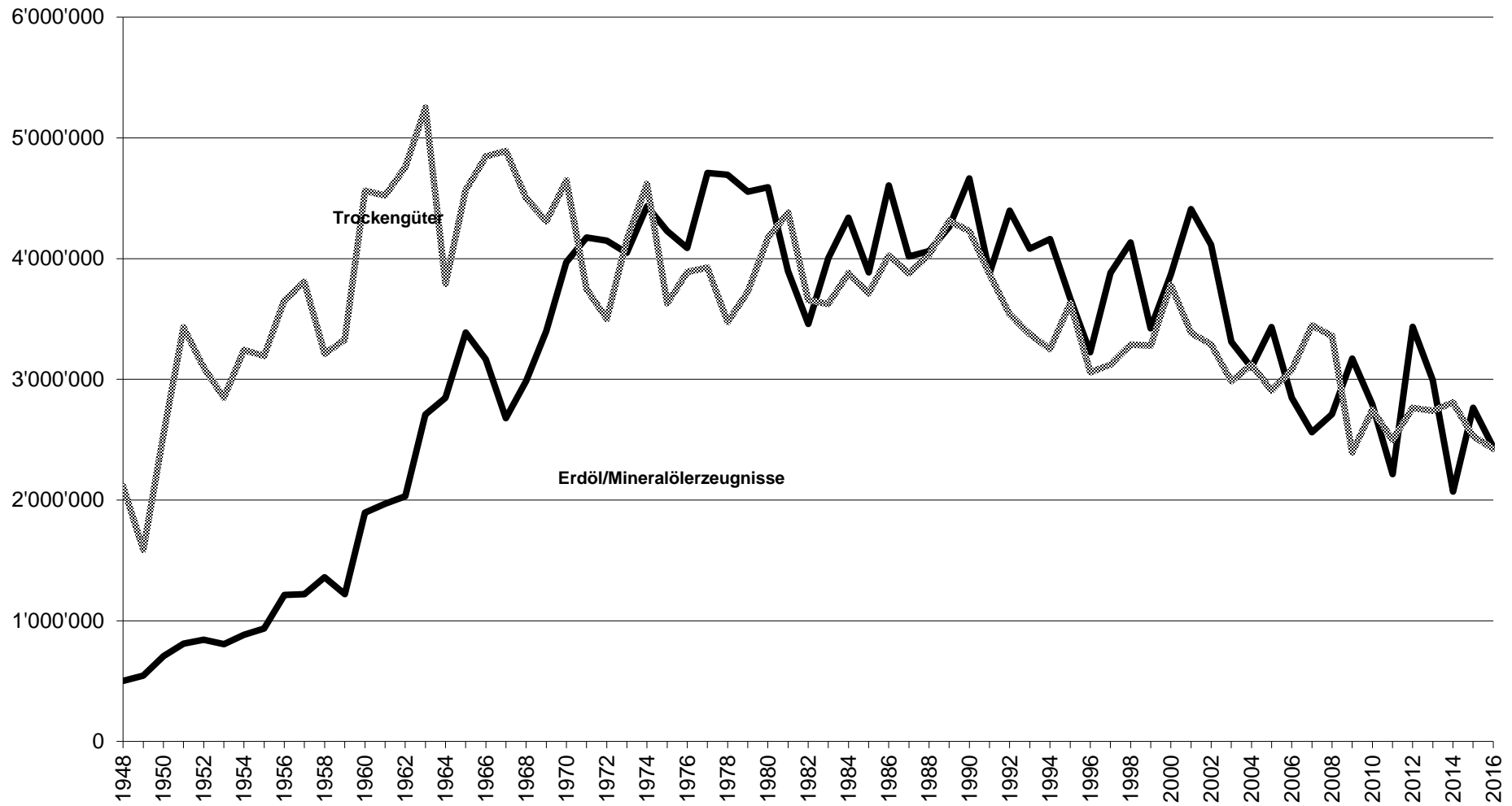
Jahr	Landw. Erzeugn.	Nahrungs- und Futterm.	Feste mineral. Brennst.	Erd-/ Mineralöl- erzeugn.	Erze und Metall- abfälle	Eisen, Stahl, NE-Met.	Steine, Erden, Baustoff.	Dünge-mittel	Chem. Erzeugn.	Fahrzeug. Masch.	Übrige Güter	TOTAL	Trocken- güter
1948		447'982	957'066	502'849							709'965	2'617'862	2'115'013
1949		490'160	675'602	546'001							423'015	2'134'778	1'588'777
1950		617'762	1'085'834	707'027							836'502	3'247'125	2'540'098
1951		589'829	1'959'918	810'074							880'275	4'240'096	3'430'022
1952		606'418	1'663'362	843'899							828'950	3'942'629	3'098'730
1953		626'723	1'321'827	805'975							899'218	3'653'743	2'847'768
1954		562'567	1'663'212	884'206							1'015'640	4'125'625	3'241'419
1955		612'255	1'323'821	935'841							1'259'057	4'130'974	3'195'133
1956		657'494	1'871'689	1'213'275							1'125'565	4'868'023	3'654'748
1957		544'453	2'099'407	1'220'485							1'164'193	5'028'538	3'808'053
1958		581'727	1'556'877	1'360'134							1'074'732	4'573'470	3'213'336
1959		569'946	1'469'698	1'220'528							1'289'065	4'549'237	3'328'709
1960		686'218	1'931'298	1'896'267							1'945'801	6'459'584	4'563'317
1961		635'427	1'520'852	1'969'654							2'367'533	6'493'466	4'523'812
1962		681'719	1'495'526	2'030'975							1'599'438	6'787'583	4'756'608
1963		554'136	1'776'337	2'709'260							1'915'701	7'960'212	5'250'952
1964		69'268	1'049'503	2'845'667							2'009'594	6'638'203	3'792'536
1965		519'335	1'125'145	3'387'980							2'248'005	7'954'214	4'566'234
1966		707'782	845'563	3'166'128							2'319'026	8'012'274	4'846'146
1967		705'706	628'849	2'678'298							2'477'467	7'569'644	4'891'346
1968		512'528	543'220	2'986'079							2'376'800	7'488'800	4'502'721
1969		533'581	418'858	3'397'922							2'318'824	7'707'255	4'309'333
1970		628'936	385'701	3'971'072							2'510'574	8'620'322	4'649'250
1971		634'125	180'273	4'175'660							2'152'225	7'925'510	3'749'850
1972		564'020	143'139	4'149'429							1'895'584	7'651'161	3'501'732
1973		624'592	152'665	4'047'930							2'234'002	8'203'931	4'156'001
1974		724'194	272'162	4'434'513							2'521'247	9'053'560	4'619'047
1975		712'093	143'189	4'228'606							2'089'038	7'859'531	3'630'925
1976		831'558	124'051	4'089'442							1'973'579	7'979'728	3'890'286
1977		894'511	154'341	4'710'147							1'864'295	8'635'818	3'925'671
1978		745'622	152'263	4'694'259							1'740'523	8'169'667	3'475'408
1979		541'669	374'488	4'555'474							1'768'240	8'280'285	3'724'811
1980		462'687	398'003	4'592'385							1'167'524	8'762'212	4'169'827
1981		530'247	713'320	3'896'509							1'077'606	8'277'359	4'380'850
1982		510'200	368'010	3'459'909							1'020'876	7'117'111	3'657'202
1983		494'841	280'630	4'005'672							1'128'472	7'629'997	3'624'325
1984		385'857	489'675	4'338'315							1'081'761	8'219'167	3'880'852
1985		371'031	374'274	3'887'103							1'083'055	7'600'568	3'713'465
1986		451'338	561'401	4'606'677							1'122'345	8'631'997	4'025'320
1987		487'317	468'421	4'018'266							1'136'239	7'897'136	3'878'870
1988		447'550	369'055	4'062'169							1'151'033	8'091'448	4'029'279
1989		375'156	257'451	4'264'064							1'181'998	8'578'161	4'314'097
1990		286'542	508'345	4'664'757							1'259'152	8'893'224	4'228'467
1991		280'661	340'358	3'878'971							1'129'132	7'750'616	3'871'645
1992		267'930	121'550	4'397'692							598'024	7'938'845	3'541'153
1993		276'080	136'377	4'082'392							558'051	7'457'431	3'375'039
1994	243'668	250'121	148'770	4'161'431							169'835	150'639	9'121
1995	394'261	275'114	209'218	3'673'476							186'562	125'261	4'253
1996	254'439	308'332	153'033	3'224'031							656'245	656'245	186'562
1997	293'768	286'372	40'919	3'880'892							173'586	346'576	13'305
1998	298'506	343'734	61'187	4'133'571							174'930	358'875	20'399
1999	268'740	339'232	54'569	3'423'237							174'930	358'875	20'399
2000	349'658	353'112	247'079	3'870'435							146'765	381'799	34'007
2001	298'782	369'891	165'017	4'410'762							149'647	334'443	37'105
2002	357'119	356'301	116'877	4'114'304							144'741	436'243	49'202
2003	372'776	398'213	87'283	3'309'694							155'986	537'581	54'827
2004	333'468	357'069	174'487	3'099'977							152'875	561'905	52'919
2005	205'852	330'906	98'041	3'433'342							152'875	561'905	52'919
2006	283'573	345'531	144'943	2'846'446							165'230	652'300	58'096
2007	365'471	448'048	222'185	2'561'276							159'716	550'425	42'680
2008	366'969	438'275	156'474	2'710'684							155'098	608'850	49'157
2009	266'689	371'673	176'034	3'172'240							157'931	645'169	51'204
2010	248'843	382'807	132'642	2'793'331							185'072	702'114	54'845
2011	337'922	415'357	83'534	2'215'518							185'072	702'114	54'845
2012	306'095	454'242	104'066	3'436'420							171'459	660'758	68'907
2013	317'372	492'052	111'711	2'992'663							171'459	660'758	68'907
2014	302'404	460'027	28'462	2'069'340							148'546	565'472	56'600
2015	268'837	450'466	65'035	2'764'242							148'546	565'472	56'600
2016	309'109	428'565	31'175	2'438'441							148'546	565'472	56'600

SCHWEIZERISCHE RHEINHÄFEN

Abgangsverkehr nach Gütergruppen

Jahr	Landw. Erzeugn.	Nahrungs- und Futterm.	Feste mineral. Brennst.	Erdöl, Mineralöl-Erzeugn.	Erze und Metallabfälle	Eisen, Stahl, NE-Met.	Steine, Erden, Baustoff.	Dünge- mittel	Chem. Erzeugn.	Fahrzeug . Masch.	Übrige Güter	TOTAL
1948		13'379			58'113				13'292		76'620	161'404
1949		6'680			31'714				7'654		71'194	117'242
1950		29'183			73'180				19'914		131'015	253'292
1951		95'320			161'226				20'386		75'385	352'317
1952		56'785			157'799				19'167		62'345	296'096
1953		55'849			106'506				18'377		88'596	269'328
1954		74'707			171'745				38'213		85'932	370'597
1955		131'508			145'631				55'543		123'764	456'446
1956		103'586			189'734				34'740		89'138	417'198
1957		71'465			194'072				24'893		77'391	367'821
1958		73'756			118'940				20'014		81'833	294'543
1959		87'660			84'574				40'702		136'178	349'114
1960		67'568			222'837				55'506		156'255	502'166
1961		63'040			119'683				40'023		101'281	324'027
1962		54'751			75'371				43'360	56'826	63'677	293'985
1963		45'778			93'439				54'529	63'941	62'948	320'635
1964		69'268			65'025				67'807	130'845	64'375	397'320
1965		208'459			103'857				66'453	167'841	114'426	661'036
1966		63'917			32'463				41'908	167'596	88'998	394'882
1967		55'665			14'705				49'250	144'670	78'086	342'376
1968		35'393			13'172				40'619	144'284	86'345	319'813
1969		38'022			12'828				30'473	130'643	97'387	309'353
1970		37'020			20'673				20'343	134'593	91'875	304'504
1971		40'414			17'662				9'062	156'473	53'153	276'764
1972		36'729			14'973				37'737	144'695	40'291	274'425
1973		27'071			14'223				21'769	137'303	43'746	244'112
1974		24'779			21'320				29'800	134'738	75'995	286'632
1975		21'960			17'404				39'489	194'768	56'109	329'730
1976		15'239			20'550				11'153	212'116	53'152	312'210
1977		13'535			19'408				3'437	295'536	40'767	372'683
1978		13'343			23'178				4'322	430'966	44'873	516'682
1979		13'154			26'828				11'175	206'813	43'412	301'382
1980					20'464	136'001				48'999	51'831	257'295
1981					29'276	140'254				44'127	45'100	258'757
1982					45'924	105'023				55'038	48'096	254'081
1983					32'985	254'497				44'839	200'513	532'834
1984					35'726	216'636				25'912	273'844	552'118
1985					30'132	218'299				31'099	221'112	500'642
1986					39'430	151'451				25'657	138'804	355'342
1987					50'871	113'962				24'537	121'426	310'796
1988					44'394	100'275				32'060	184'615	361'344
1989					43'246	105'638				26'429	91'688	267'001
1990					45'396	95'477				21'492	138'949	301'314
1991					42'451	116'750				29'833	413'751	602'785
1992		532	3'410	255'074	36'924	160'769	4'330	4'557	3'652	29'595	93'222	592'065
1993		904	19	410'288	31'339	199'403	1'176	0	8'086	39'835	134'901	825'951
1994	2'365	15'043	19	386'105	37'311	115'393	12'467	5'596	109'314	64'770	45'653	794'036
1995	3'662	30'629	6'589	226'213	69'603	96'209	12'851	7'945	110'504	104'987	51'984	721'176
1996	3'204	36'665	3'340	348'239	79'764	85'427	8'655	11'381	131'800	106'954	61'458	876'887
1997	7'107	46'612	19	186'974	109'199	137'733	6'451	2'423	134'467	133'351	73'150	837'486
1998	10'300	43'642	0	85'282	64'818	146'179	8'908	10'088	99'168	140'776	79'270	688'431
1999	4'416	42'557	0	195'681	46'136	131'785	14'798	0	101'069	132'366	77'453	746'261
2000	9'177	48'758	0	286'812	70'572	120'099	6'186	4'707	129'270	137'445	80'907	893'933
2001	2'211	38'258	0	232'161	70'876	133'743	421	2'652	150'573	134'629	72'659	838'183
2002	2'740	38'926	0	201'459	63'734	126'193	1'940	10'315	171'612	160'777	74'999	852'695
2003	6'627	46'049	0	234'669	39'747	93'734	10'778	6'891	177'656	167'783	90'555	874'489
2004	17'120	64'443	0	280'177	29'333	105'484	25'425	0	203'231	190'626	108'898	1'024'737
2005	15'490	73'437	0	173'991	28'779	77'444	67'659	232	196'798	172'381	113'780	919'991
2006	15'598	72'341	0	181'075	43'791	93'000	14'605	447	119'589	175'271	111'676	827'393
2007	18'652	95'284	0	255'207	39'840	155'353	9'701	401	196'274	195'455	133'594	1'099'761
2008	10'725	102'142	25	333'857	36'944	136'824	29'056	0	207'178	163'171	121'983	1'141'905
2009	7'216	119'809	0	259'473	26'292	75'571	26'896	73	133'529	132'617	95'551	877'027
2010	6'359	142'789	0	281'694	69'200	76'788	78'692	2'316	73'140	134'912	110'902	976'792
2011	7'462	91'666	0	264'814	60'284	75'661	136'732	31	134'448	95'340	97'798	964'236
2012	12'654	69'152	0	152'380	71'587	109'032	204'972	16	123'069	145'618	122'273	1'010'753
2013	18'087	74'717	0	311'074	89'238	70'541	137'954	39	146'476	130'521	118'436	1'097'083
2014	25'319	68'403	0	247'516	80'862	72'110	191'548	0	147'290	146'813	124'717	1'104'578
2015	32'585	62'097	22	281'117	62'932	52'361	177'069	2	128'644	131'333	111'092	1'039'254
2016	36'304	89'767	0	211'000	75'568	41'058	141'256	1'311	144'951	156'419	136'051	1'033'685

# Ankunftsverkehr Trocken- und Flüssiggüter



Zufuhr	Landw. Erzeugnisse GRUPPE 0		Nahrungs und Futtermittel GRUPPE 1		Feste min. Brennstoffe GRUPPE 2		Erd.,Miner., Oel-Erzeugnisse GRUPPE 3		Erzeugnisse Metallabbau GRUPPE 4		Eisen, Stahl, Ne. Met GRUPPE 5	
	2016	2015	2016	2015	2016	2015	2016	2015	2016	2015	2016	2015
Januar	49,527	45,254	52,151	33,620	0	0	318,578	282,699	2,035	3,353	23,807	30,541
Februar	34,305	19,689	40,931	49,001	0	24	172,704	213,030	5,048	8,133	29,812	26,872
März	24,780	25,066	40,919	38,542	3,763	182	226,816	234,401	3,876	8,957	21,896	44,385
April	30,535	17,460	27,941	37,202	8,897	6,193	233,704	242,796	11,115	13,404	32,865	30,013
Mai	11,487	26,496	40,784	38,099	7,775	4,185	229,709	324,451	4,111	10,644	21,703	35,250
Juni	19,131	21,049	27,627	32,631	0	11,388	170,351	325,028	3,236	9,297	27,465	36,281
Juli	25,657	15,525	35,904	39,456	1,582	2,391	269,624	217,511	5	5,696	24,136	21,580
August	17,626	15,545	43,152	37,441	2,475	4,245	183,231	126,049	151	2,334	27,699	24,509
September	17,364	29,844	24,297	40,615	33	356	182,257	138,601	2,120	0	24,946	24,203
Oktober	16,592	13,108	36,167	31,764	18	0	140,339	208,403	20	4,615	18,676	22,793
November	32,010	12,764	25,909	33,971	6,632	6,831	174,847	175,821	0	1,494	22,592	22,631
Dezember	30,095	27,037	32,783	38,124	0	29,240	136,281	275,452	0	1,382	13,471	13,811
Total	309,109	268,837	428,565	450,466	31,175	65,035	2,438,441	2,764,242	31,717	69,309	289,068	332,869
Zufuhr	Steine, Erden, Baust. GRUPPE 6		Düngemittel GRUPPE 7		Chemische Erzeugnisse GRUPPE 8		Fahrzeuge, Maschinen GRUPPE 9		Übrige Güter GRUPPE 99		Totalverkehr	
	2016	2015	2016	2015	2016	2015	2016	2015	2016	2015	2016	2015
Januar	49,856	49,436	13,977	7,665	13,237	24,265	11,026	13,567	11,127	12,093	545,321	502,493
Februar	63,880	71,835	9,897	6,378	23,658	15,777	10,063	12,429	10,610	11,119	400,908	434,287
März	64,327	72,649	2,914	5,303	11,612	19,805	9,553	13,286	11,693	11,782	422,149	474,358
April	69,460	66,030	7,476	6,373	20,891	19,831	8,169	7,315	9,660	9,372	460,713	455,989
Mai	65,148	60,967	12,340	10,922	24,927	17,412	9,458	9,442	10,183	9,979	437,625	547,847
Juni	74,606	85,700	6,682	12,548	16,309	15,527	7,468	8,463	8,095	8,959	360,970	566,871
Juli	79,179	80,948	7,903	11,590	17,804	15,744	9,972	7,856	12,002	9,788	483,768	428,085
August	67,638	52,648	8,732	10,893	18,254	15,178	9,141	8,211	13,358	10,061	391,457	307,114
September	70,218	75,180	10,666	11,898	15,612	16,774	8,568	8,535	12,026	10,504	368,107	356,510
Oktober	68,655	66,525	16,017	11,898	11,355	17,657	6,252	5,228	8,124	7,433	322,215	389,424
November	74,474	70,321	22,625	13,925	13,844	6,649	4,712	3,435	9,734	6,511	387,379	354,353
Dezember	37,109	54,593	5,764	7,287	13,824	14,510	5,146	6,454	7,733	9,363	282,206	477,253
Total	784,550	806,832	124,993	116,680	201,327	199,129	99,528	104,221	124,345	116,964	4,862,818	5,294,584
<b>Zusammenfassung Januar - Dezember</b>												
Total Zufuhr 2016			4,862,818	Total Abfuhr 2016			1,033,685	Totalverkehr 2016			5,896,503	
Total Zufuhr 2015			5,294,584	Total Abfuhr 2015			1,039,254	Totalverkehr 2015			6,333,838	
+/- zum Vergleich in %			-8.15	+/- zum Vorjahr in %			-0.54	+/- zum Vergleich in %			-6.90	

Abfuhr	Landw. Erzeugnisse GRUPPE 0		Nahrungs und Futtermittel GRUPPE 1		Feste min. Brennstoffe GRUPPE 2		Erd.,Miner., Oel-Erzeugnisse GRUPPE 3		Erzeugnisse Metallabbau GRUPPE 4		Eisen, Stahl, Ne. Met GRUPPE 5	
	2016	2015	2016	2015	2016	2015	2016	2015	2016	2015	2016	2015
Januar	4,788	2,996	7,535	4,691	0	0	35,326	29,363	26	4,374	8,451	10,155
Februar	4,231	2,099	8,146	5,599	0	0	29,068	33,266	5,395	3,440	932	4,628
März	4,515	3,336	6,208	5,114	0	0	24,263	37,184	3,792	2,977	4,409	4,917
April	6,163	4,210	9,976	6,398	0	0	27,955	34,810	9,509	4,943	2,368	3,169
Mai	4,007	3,665	10,133	4,941	0	0	16,775	27,869	4,491	5,313	1,447	1,529
Juni	1,430	4,090	6,930	6,983	0	0	14,075	10,843	7,987	7,574	2,871	4,538
Juli	2,046	3,072	9,902	5,697	0	0	14,014	16,321	11,160	4,659	6,246	5,302
August	362	974	7,548	4,619	0	0	10,658	15,728	7,150	6,070	2,433	514
September	3,357	2,305	6,239	6,060	0	0	8,495	16,927	9,147	5,745	1,713	7,077
Oktober	2,622	3,162	5,516	4,549	0	0	9,316	21,375	4,364	6,963	3,419	2,385
November	1,515	778	5,914	2,622	0	0	9,760	23,172	5,536	4,045	4,432	545
Dezember	1,268	1,898	5,720	4,824	0	22	11,295	14,259	7,011	6,829	2,337	7,602
Total	36,304	32,585	89,767	62,097	0	22	211,000	281,117	75,568	62,932	41,058	52,361
Abfuhr	Steine, Erden, Baust. GRUPPE 6		Düngemittel GRUPPE 7		Chemische Erzeugnisse GRUPPE 8		Fahrzeuge, Maschinen GRUPPE 9		Übrige Güter GRUPPE 99		Totalverkehr	
	2016	2015	2016	2015	2016	2015	2016	2015	2016	2015	2016	2015
Januar	13,940	9,250	0	0	8,957	13,290	7,718	10,581	9,279	8,002	96,020	92,702
Februar	14,271	18,800	0	2	12,318	8,366	12,983	12,484	11,352	9,728	98,696	98,412
März	16,485	11,992	0	0	12,826	11,231	12,471	14,287	11,377	10,153	96,346	101,191
April	27,018	29,351	0	0	11,801	12,027	17,748	15,821	12,578	10,668	125,116	121,397
Mai	23,257	13,714	0	0	15,759	10,871	14,817	13,148	11,490	8,298	102,176	89,348
Juni	7,550	19,165	359	0	12,393	12,205	11,000	14,769	8,820	10,942	73,415	91,109
Juli	10,956	23,214	9	0	13,902	13,797	16,773	13,620	15,993	10,898	101,001	96,580
August	6,576	12,048	0	0	11,021	10,214	14,292	7,089	12,886	8,827	72,926	66,083
September	4,111	9,202	0	0	12,318	10,687	16,706	7,236	12,532	8,715	74,618	73,954
Oktober	5,159	7,367	914	0	12,267	9,129	7,974	7,233	11,422	9,649	62,973	71,812
November	9,488	5,719	29	0	11,016	8,220	13,098	5,831	10,258	6,616	71,046	57,548
Dezember	2,445	17,247	0	0	10,373	8,607	10,839	9,234	8,064	8,596	59,352	79,118
Total	141,256	177,069	1,311	2	144,951	128,644	156,419	131,333	136,051	111,092	1,033,685	1,039,254
<b>Zusammenfassung Januar - Dezember</b>												
Total Zufuhr 2016			4,862,818		Total Abfuhr 2016			1,033,685		Totalverkehr 2016		5,896,503
Total Zufuhr 2015			5,294,584		Total Abfuhr 2015			1,039,254		Totalverkehr 2015		6,333,838
+/- zum Vergleich in %			-8.15		+/- zum Vorjahr in %			-0.54		+/- zum Vergleich in %		-6.90