

Jahresstatistik der Schweizerischen Rheinhäfen

Rheinhafenverkehr nach Gütergruppen 2011

Ankunftsverkehr nach Gütergruppen
Abgangsverkehr nach Gütergruppen
Grafik Ankunftsverkehr Trocken- und Flüssiggüter
Zufuhr nach Gütergruppen
Abfuhr nach Gütergruppen

SCHWEIZERISCHE RHEINHÄFEN
Ankunftsverkehr nach Gütergruppen

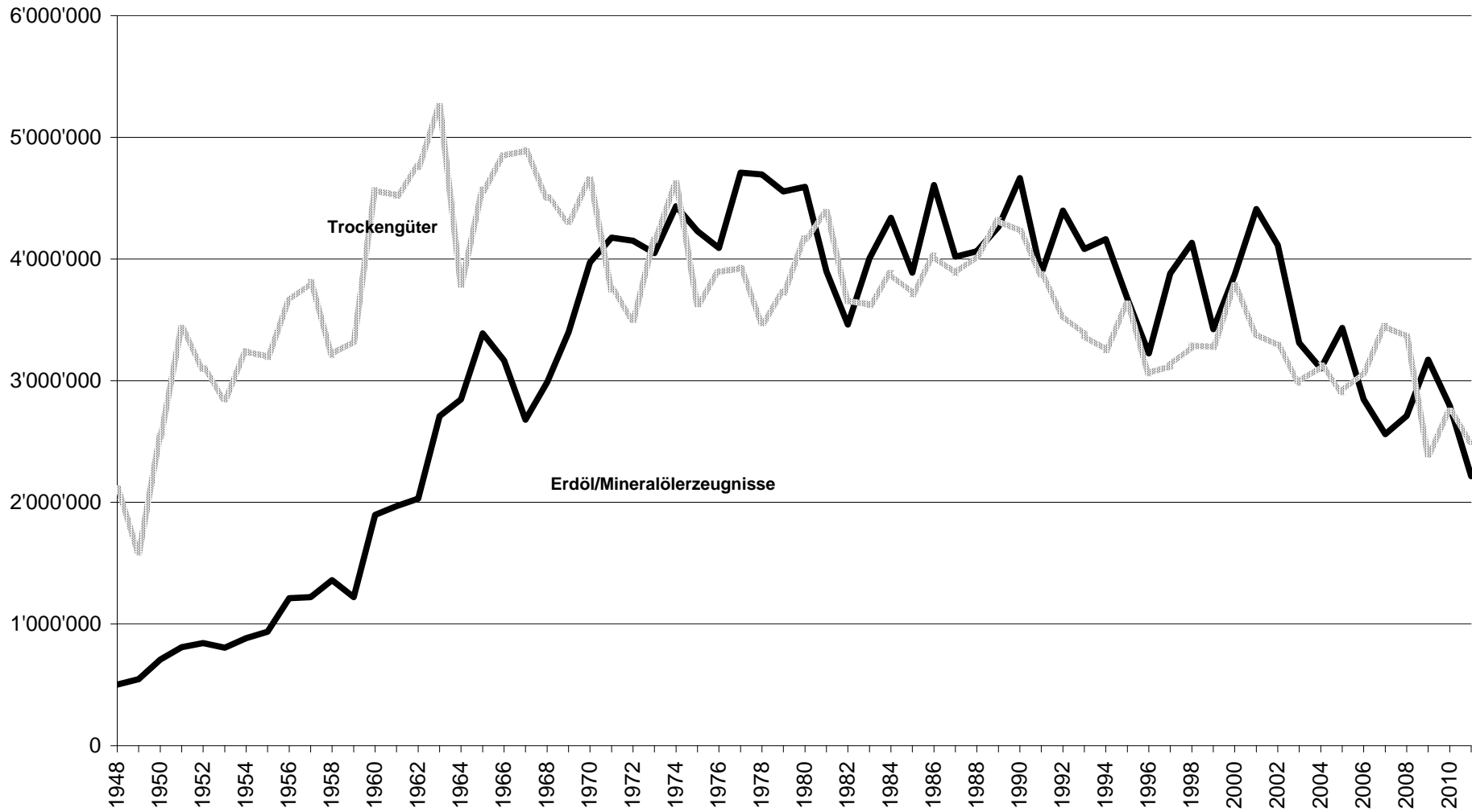
Jahr	Landw. Erzeugn.	Nahrungs- und Futterm.	Feste mineral. Brennst.	Erd-/ Mineralöl-erzeugn.	Erze und Metall- abfälle	Eisen, Stahl, NE-Met.	Steine, Erden, Baustoff.	Dünge- mittel	Chem. Erzeugn.	Fahrzeug- Masch.	Übrige Güter	TOTAL	Trocken- güter
1948		447'982	957'066	502'849							709'965	2'617'862	2'115'013
1949		490'160	675'602	546'001							423'015	2'134'778	1'588'777
1950		617'762	1'085'834	707'027							836'502	3'247'125	2'540'098
1951		589'829	1'959'918	810'074							880'275	4'240'096	3'430'022
1952		606'418	1'663'362	843'899							828'950	3'942'629	3'098'730
1953		626'723	1'321'827	805'975							899'218	3'653'743	2'847'768
1954		562'567	1'663'212	884'206							1'015'640	4'125'625	3'241'419
1955		612'255	1'323'821	935'841							1'259'057	4'130'974	3'195'133
1956		657'494	1'871'689	1'213'275							1'125'565	4'868'023	3'654'748
1957		544'453	2'099'407	1'220'485							1'164'193	5'028'538	3'808'053
1958		581'727	1'556'877	1'360'134							1'074'732	4'573'470	3'213'336
1959		569'946	1'469'698	1'220'528							1'289'065	4'549'237	3'328'709
1960		686'218	1'931'298	1'896'267							1'945'801	6'459'584	4'563'317
1961		635'427	1'520'852	1'969'654							2'367'533	6'493'466	4'523'812
1962		681'719	1'495'526	2'030'975							1'599'438	6'787'583	4'756'608
1963		554'136	1'776'337	2'709'260							1'915'701	7'960'212	5'250'952
1964		69'268	1'049'503	2'845'667							2'009'594	6'638'203	3'792'536
1965		519'335	1'125'145	3'387'980							2'248'005	7'954'214	4'566'234
1966		707'782	845'563	3'166'128							2'319'026	8'012'274	4'846'146
1967		705'706	628'849	2'678'298							2'477'467	7'569'644	4'891'346
1968		512'528	543'220	2'986'079							2'376'800	7'488'800	4'502'721
1969		533'581	418'858	3'397'922							2'318'824	7'707'255	4'309'333
1970		628'936	385'701	3'971'072							2'510'574	8'620'322	4'699'250
1971		634'125	180'273	4'175'660							2'152'225	7'925'510	3'749'850
1972		564'020	143'139	4'149'429							1'895'584	7'651'161	3'501'732
1973		624'592	152'665	4'047'930							2'234'002	8'203'931	4'156'001
1974		724'194	272'162	4'434'513							2'521'247	9'053'560	4'619'047
1975		712'093	143'189	4'228'606							2'089'038	7'859'531	3'630'925
1976		831'558	124'051	4'089'442							1'973'579	7'979'728	3'890'286
1977		894'511	154'341	4'710'147							1'864'295	8'635'818	3'925'671
1978		745'622	152'263	4'694'259							1'740'523	8'169'667	3'475'408
1979		541'669	374'488	4'555'474							1'768'240	8'280'285	3'724'811
1980		462'687	398'003	4'592'385	467'077	1'122'239	552'297				1'167'524	8'762'212	4'169'827
1981		530'247	713'320	3'896'509	548'037	946'250	565'390				1'077'606	8'277'359	4'380'850
1982		510'200	368'010	3'459'909	265'420	895'105	597'591				1'020'876	7'117'111	3'657'202
1983		494'841	280'630	4'005'672	144'480	926'821	649'081				1'128'472	7'629'997	3'624'325
1984		385'857	489'675	4'338'315	192'448	1'071'807	659'304				1'081'761	8'219'167	3'880'852
1985		371'031	374'274	3'887'103	223'035	1'061'934	600'136				1'083'055	7'600'568	3'713'465
1986		451'338	561'401	4'606'677	116'061	1'252'678	521'497				1'122'345	8'631'997	4'025'320
1987		487'317	468'421	4'018'266	42'344	1'136'181	608'368				1'136'239	7'897'136	3'878'870
1988		447'550	369'055	4'062'169	36'730	1'321'684	703'227				1'151'033	8'091'448	4'029'279
1989		375'156	257'451	4'264'064	231'296	1'402'510	865'686				1'181'998	8'578'161	4'314'097
1990		286'542	508'345	4'664'757	131'468	1'409'760	633'200				1'259'152	8'893'224	4'228'467
1991		280'661	340'358	3'878'971	190'355	1'266'753	664'386				1'129'132	7'750'616	3'871'645
1992		267'930	121'550	4'397'692	285'980	1'222'169	715'905	169'835	150'639	9'121	598'024	7'938'845	3'541'153
1993		276'080	136'377	4'082'392	250'601	1'181'609	656'245	186'562	125'261	4'253	558'051	7'457'431	3'375'039
1994	243'668	250'121	148'770	4'161'431	97'229	1'110'802	824'709	173'586	346'576	13'305	42'541	7'412'738	3'251'307
1995	394'261	275'114	209'218	3'673'476	53'153	1'201'720	894'746	174'930	358'875	20'399	48'026	7'303'918	3'630'442
1996	254'439	308'332	153'033	3'224'031	41'234	899'363	784'233	146'765	381'799	34'007	56'160	6'283'396	3'059'365
1997	293'768	286'372	40'919	3'880'892	93'875	1'207'514	609'798	149'647	334'443	37'105	68'110	7'002'443	3'121'551
1998	298506	343'734	61'187	4'133'571	101'797	1'130'600	640'914	144'741	436'243	49'202	79'821	7'420'316	3'286'745
1999	268'740	339'232	54'569	3'423'237	75'275	1'183'367	538'675	155'986	537'581	54'827	70'100	6'701'589	3'278'352
2000	349'658	353'112	247'079	3'870'435	69'726	1'283'723	629'258	152'875	561'905	52'919	81'110	7'651'800	3'781'365
2001	298'782	369'891	165'017	4'410'762	70'569	1'103'140	524'735	165'230	551'622	58'096	78'121	7'795'965	3'385'203
2002	357'119	356'301	116'877	4'114'304	92'709	1'031'548	502'955	159'716	550'425	42'680	77'304	7'401'938	3'287'634
2003	372'776	398'213	87'283	3'309'694	131'300	698'809	411'227	155'098	608'850	49'157	73'892	6'296'299	2'986'605
2004	333'468	357'069	174'487	3'099'977	135'962	727'289	452'590	157'931	645'169	51'204	85'746	6'220'892	3'120'915
2005	205'852	330'906	98'041	3'433'342	78'461	675'295	484'305	185'072	702'114	54'845	92'638	6'340'871	2'907'529
2006	283'573	345'531	144'943	2'846'446	113'357	769'218	438'986	160'596	654'474	74'682	90'483	5'922'289	3'075'843
2007	365'471	448'048	222'185	2'561'276	72'196	837'106	498'265	171'459	660'758	68'907	102'798	6'008'469	3'447'193
2008	366'969	438'275	156'474	2'710'684	55'821	811'766	562'337	148'546	656'472	56'600	106'413	6'070'357	3'359'673
2009	266'689	371'673	176'034	3'172'240	36'445	398'164	393'559	113'294	499'814	55'299	83'450	5'566'661	2'394'421
2010	248'843	382'807	132'642	2'793'331	34'492	624'017	424'913	142'019	566'055	90'416	101'949	5'541'484	2'748'153
2011	337'922	415'357	83'534	2'215'518	31'689	438'210	530'701	124'136	373'550	72'739	90'396	4'713'752	2'498'234

SCHWEIZERISCHE RHEINHÄFEN

Abgangsverkehr nach Gütergruppen

Jahr	Landw. Erzeugn.	Nahrungs- und Futterm.	Feste mineral. Brennst.	Erdöl, Mineralöl- Erzeugn.	Erze und Metall- abfälle	Eisen, Stahl, NE-Met.	Steine, Erden, Baustoff.	Dünge- mittel	Chem. Erzeugn.	Fahrzeug. Masch.	Übrige Güter	TOTAL
1948		13'379			58'113				13'292		76'620	161'404
1949		6'680			31'714				7'654		71'194	117'242
1950		29'183			73'180				19'914		131'015	253'292
1951		95'320			161'226				20'386		75'385	352'317
1952		56'785			157'799				19'167		62'345	296'096
1953		55'849			106'506				18'377		88'596	269'328
1954		74'707			171'745				38'213		85'932	370'597
1955		131'508			145'631				55'543		123'764	456'446
1956		103'586			189'734				34'740		89'138	417'198
1957		71'465			194'072				24'893		77'391	367'821
1958		73'756			118'940				20'014		81'833	294'543
1959		87'660			84'574				40'702		136'178	349'114
1960		67'568			222'837				55'506		156'255	502'166
1961		63'040			119'683				40'023		101'281	324'027
1962		54'751			75'371				43'360	56'826	63'677	293'985
1963		45'778			93'439				54'529	63'941	62'948	320'635
1964		69'268			65'025				67'807	130'845	64'375	397'320
1965		208'459			103'857				66'453	167'841	114'426	661'036
1966		63'917			32'463				41'908	167'596	88'998	394'882
1967		55'665			14'705				49'250	144'670	78'086	342'376
1968		35'393			13'172				40'619	144'284	86'345	319'813
1969		38'022			12'828				30'473	130'643	97'387	309'353
1970		37'020			20'673				20'343	134'593	91'875	304'504
1971		40'414			17'662				9'062	156'473	53'153	276'764
1972		36'729			14'973				37'737	144'695	40'291	274'425
1973		27'071			14'223				21'769	137'303	43'746	244'112
1974		24'779			21'320				29'800	134'738	75'995	286'632
1975		21'960			17'404				39'489	194'768	56'109	329'730
1976		15'239			20'550				11'153	212'116	53'152	312'210
1977		13'535			19'408				3'437	295'536	40'767	372'683
1978		13'343			23'178				4'322	430'966	44'873	516'682
1979		13'154			26'828				11'175	206'813	43'412	301'382
1980					20'464					48'999	51'831	257'295
1981					29'276					44'127	45'100	258'757
1982					45'924					55'038	48'096	254'081
1983					32'985					44'839	200'513	532'834
1984					35'726					25'912	273'844	552'118
1985					30'132					31'099	221'112	500'642
1986					39'430					25'657	138'804	355'342
1987					50'871					24'537	121'426	310'796
1988					44'394					32'060	184'615	361'344
1989					43'246					26'429	91'688	267'001
1990					45'396					21'492	138'949	301'314
1991					42'451					29'833	413'751	602'785
1992		532	3'410	255'074	36'924	160'769	4'330	4'557	3'652	29'595	93'222	592'065
1993		904	19	410'288	31'339	199'403	1'176	0	8'086	39'835	134'901	825'951
1994	2'365	15'043	19	386'105	37'311	115'393	12'467	5'596	109'314	64'770	45'653	794'036
1995	3'662	30'629	6'589	226'213	69'603	96'209	12'851	7'945	110'504	104'987	51'984	721'176
1996	3'204	36'665	3'340	348'239	79'764	85'427	8'655	11'381	131'800	106'954	61'458	876'887
1997	7'107	46'612	19	186'974	109'199	137'733	6'451	2'423	134'467	133'351	73'150	837'486
1998	10'300	43'642	0	85'282	64'818	146'179	8'908	10'088	99'168	140'776	79'270	688'431
1999	4'416	42'557	0	195'681	46'136	131'785	14'798	0	101'069	132'366	77'453	746'261
2000	9'177	48'758	0	286'812	70'572	120'099	6'186	4'707	129'270	137'445	80'907	893'933
2001	2'211	38'258	0	232'161	70'876	133'743	421	2'652	150'573	134'629	72'659	838'183
2002	2'740	38'926	0	201'459	63'734	126'193	1'940	10'315	171'612	160'777	74'999	852'695
2003	6'627	46'049	0	234'669	39'747	93'734	10'778	6'891	177'656	167'783	90'555	874'489
2004	17'120	64'443	0	280'177	29'333	105'484	25'425	0	203'231	190'626	108'898	1'024'737
2005	15'490	73'437	0	173'991	28'779	77'444	67'659	232	196'798	172'381	113'780	919'991
2006	15'598	72'341	0	181'075	43'791	93'000	14'605	447	119'589	175'271	111'676	827'393
2007	18'652	95'284	0	255'207	39'840	155'353	9'701	401	196'274	195'455	133'594	1'099'761
2008	10'725	102'142	25	333'857	36'944	136'824	29'056	0	207'178	163'171	121'983	1'141'905
2009	7'216	119'809	0	259'473	26'292	75'571	26'896	73	133'529	132'617	95'551	877'027
2010	6'359	142'789	0	281'694	69'200	76'788	78'692	2'316	73'140	134'912	110'902	976'792
2011	7'462	91'666	0	264'814	60'284	75'661	136'732	31	134'448	95'340	97'798	964'236

Ankunftsverkehr Trocken- und Flüssiggüter



Zufuhr	Landw. Erzeugnisse GRUPPE 0		Nahrungs und Futtermittel GRUPPE 1		Feste min. Brennstoffe GRUPPE 2		Erd., Miner., Oel-Erzeugnisse GRUPPE 3		Erzeugnisse Metallabbau GRUPPE 4		Eisen, Stahl, Ne. Met GRUPPE 5	
	2011	2010	2011	2010	2011	2010	2011	2010	2011	2010	2011	2010
Januar	15,493	12,662	33,250	26,372	1,696	1,995	168,023	270,291	1,115	1,291	34,835	51,387
Februar	32,403	16,121	25,258	23,097	4,421	5,445	138,036	158,730	4,939	2,041	38,702	49,139
März	76,642	29,277	30,167	35,186	9,218	13,954	202,502	160,177	10,012	3,103	46,148	58,097
April	10,091	13,763	40,707	32,856	2,505	5,597	188,802	222,430	1,773	928	39,623	57,564
Mai	13,392	37,712	33,122	31,173	3,934	13,141	135,829	311,625	2,486	6,677	44,778	60,915
Juni	40,776	32,829	42,432	29,858	7,946	9,080	191,715	199,955	2,530	2,560	40,696	67,955
Juli	34,451	13,516	34,004	27,285	12,497	17,256	266,184	269,107	17	0	31,430	45,955
August	16,455	6,100	45,080	36,577	4,532	14,402	264,208	243,226	1,549	1,012	40,635	56,936
September	16,709	5,292	19,416	31,777	16,981	6,746	219,210	203,322	4,700	8,568	39,423	42,730
Oktober	35,147	25,632	50,510	33,723	15,782	14,834	161,344	258,122	1,551	2,130	33,259	48,704
November	16,655	28,112	26,357	40,662	0	19,303	80,860	271,906	1,017	1,430	27,056	46,425
Dezember	29,708	27,827	35,054	34,241	4,022	10,889	198,805	224,440	0	4,752	21,625	38,210
Total	337,922	248,843	415,357	382,807	83,534	132,642	2,215,518	2,793,331	31,689	34,492	438,210	624,017
Zufuhr	Steine, Erden, Baust. GRUPPE 6		Düngemittel GRUPPE 7		Chemische Erzeugnisse GRUPPE 8		Fahrzeuge, Maschinen GRUPPE 9		Übrige Güter GRUPPE 99		Totalverkehr	
	2011	2010	2011	2010	2011	2010	2011	2010	2011	2010	2011	2010
Januar	20,905	8,726	13,917	7,597	26,545	42,387	6,419	6,091	5,923	7,403	328,121	436,202
Februar	37,498	13,906	7,355	13,762	37,364	43,078	6,498	7,094	6,952	7,369	339,426	339,782
März	32,922	35,054	5,678	11,160	46,282	53,108	7,068	8,524	8,925	8,994	475,564	416,634
April	29,963	30,526	6,573	5,541	37,660	37,923	5,031	5,360	8,845	6,325	371,573	418,813
Mai	37,279	36,418	4,844	6,745	42,075	41,588	5,212	14,758	7,634	9,285	330,585	570,037
Juni	42,254	50,324	7,990	6,436	37,076	43,552	4,921	12,767	7,079	9,595	425,415	464,911
Juli	43,762	49,218	15,548	17,879	35,581	44,461	6,337	6,281	7,686	12,997	487,497	503,955
August	56,063	40,533	21,684	15,358	32,174	50,911	7,734	8,294	9,664	8,204	499,778	481,553
September	42,843	42,003	10,429	15,137	23,391	49,255	6,171	5,458	8,238	8,240	407,511	418,528
Oktober	56,135	41,901	15,514	16,977	21,227	52,574	6,125	4,526	6,904	7,617	403,498	506,740
November	65,637	51,007	11,390	15,356	16,685	50,587	4,932	4,641	6,649	7,739	257,238	537,168
Dezember	65,440	25,297	3,214	10,071	17,490	56,631	6,291	6,622	5,897	8,181	387,546	447,161
Total	530,701	424,913	124,136	142,019	373,550	566,055	72,739	90,416	90,396	101,949	4,713,752	5,541,484
Zusammenfassung Januar - Dezember												
Total Zufuhr 2011			4,713,752	Total Abfuhr 2011			964,236	Totalverkehr 2011			5,677,988	
Total Zufuhr 2010			5,541,484	Total Abfuhr 2010			976,792	Totalverkehr 2010			6,518,276	
+/- zum Vergleich in %			-14.94	+/- zum Vorjahr in %			-1.29	+/- zum Vergleich in %			-12.89	

Abfuhr	Landw. Erzeugnisse GRUPPE 0		Nahrungs und Futtermittel GRUPPE 1		Feste min. Brennstoffe GRUPPE 2		Erd., Miner., Oel-Erzeugnisse GRUPPE 3		Erzeugnisse Metallabbau GRUPPE 4		Eisen, Stahl, Ne. Met GRUPPE 5	
	2011	2010	2011	2010	2011	2010	2011	2010	2011	2010	2011	2010
Januar	287	564	6,941	13,975	0	0	14,439	23,298	3,000	1,018	1,389	5,149
Februar	1,780	254	10,556	15,722	0	0	14,364	17,017	5,911	8,351	8,324	3,350
März	899	262	14,765	9,705	0	0	24,223	9,988	3,693	7,104	6,205	7,345
April	1,545	332	11,783	12,653	0	0	23,728	21,194	7,825	3,095	3,641	10,882
Mai	662	951	8,515	10,886	0	0	19,273	14,966	1,154	5,808	6,188	10,096
Juni	209	618	7,226	12,125	0	0	25,933	27,439	7,965	2,895	3,612	7,317
Juli	223	363	7,398	11,714	0	0	27,553	30,145	4,840	1,855	5,023	5,082
August	289	238	5,945	7,955	0	0	26,508	27,781	1,073	9,397	2,444	4,199
September	200	1,081	6,082	11,737	0	0	29,808	35,412	4,738	6,684	5,131	4,789
Oktober	514	475	4,991	13,159	0	0	21,344	27,925	12,144	7,596	6,462	4,877
November	442	410	3,448	8,686	0	0	14,329	21,195	2,567	8,845	9,546	3,996
Dezember	412	811	4,016	14,472	0	0	23,312	25,334	5,374	6,552	17,696	9,706
Total	7,462	6,359	91,666	142,789	0	0	264,814	281,694	60,284	69,200	75,661	76,788
Abfuhr	Steine, Erden, Baust. GRUPPE 6		Düngemittel GRUPPE 7		Chemische Erzeugnisse GRUPPE 8		Fahrzeuge, Maschinen GRUPPE 9		Übrige Güter GRUPPE 99		Totalverkehr	
	2011	2010	2011	2010	2011	2010	2011	2010	2011	2010	2011	2010
Januar	257	193	0	1,387	9,711	10,194	5,412	10,190	4,584	7,721	46,020	73,689
Februar	17,064	3,240	0	0	10,366	6,027	8,628	9,128	7,852	8,682	84,845	71,771
März	10,726	2,356	0	0	13,114	4,597	10,598	8,893	10,402	7,939	94,625	58,189
April	14,094	7,845	0	0	11,852	7,544	9,057	8,030	9,818	9,082	93,343	80,657
Mai	18,411	2,777	0	0	12,860	3,580	6,226	8,383	5,936	7,991	79,225	65,438
Juni	9,174	3,923	0	28	11,521	6,074	7,992	14,196	7,566	10,750	81,198	85,365
Juli	12,381	11,023	31	39	12,342	5,486	9,821	10,905	10,660	10,888	90,272	87,500
August	11,345	2,025	0	0	9,138	6,915	4,506	14,378	8,267	9,988	69,515	82,876
September	9,191	3,209	0	862	13,234	5,345	9,246	10,272	9,433	10,155	87,063	89,546
Oktober	11,770	5,909	0	0	10,520	5,549	8,770	14,860	9,316	10,943	85,831	91,293
November	9,538	27,026	0	0	7,602	3,761	5,045	13,226	6,730	7,741	59,247	94,886
Dezember	12,781	9,166	0	0	12,188	8,068	10,039	12,451	7,234	9,022	93,052	95,582
Total	136,732	78,692	31	2,316	134,448	73,140	95,340	134,912	97,798	110,902	964,236	976,792
Zusammenfassung Januar - Dezember												
Total Zufuhr 2011			4,713,752		Total Abfuhr 2011			964,236		Totalverkehr 2011		5,677,988
Total Zufuhr 2010			5,541,484		Total Abfuhr 2010			976,792		Totalverkehr 2010		6,518,276
+/- zum Vergleich in %			-14.94		+/- zum Vorjahr in %			-1.29		+/- zum Vergleich in %		-12.89