

Jahresstatistik der Schweizerischen Rheinhäfen

Rheinhafenverkehr nach Gütergruppen 2013

Ankunftsverkehr nach Gütergruppen
Abgangsverkehr nach Gütergruppen
Grafik Ankunftsverkehr nach Trocken- und Flüssiggüter
Zufuhr nach Gütergruppen
Abfuhr nach Gütergruppen

SCHWEIZERISCHE RHEINHÄFEN
Ankunftsverkehr nach Gütergruppen

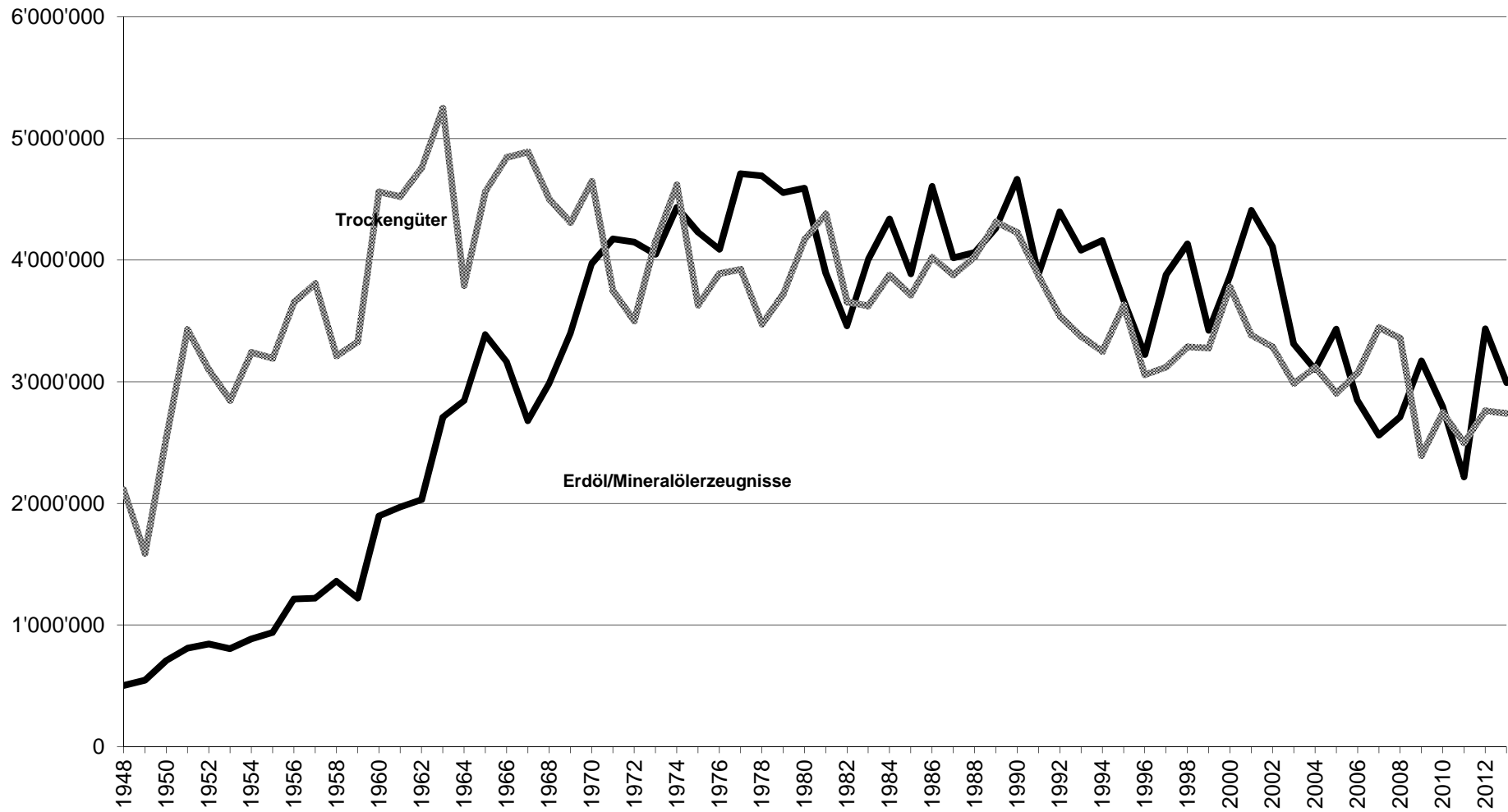
Jahr	Landw. Erzeugn.	Nahrungs- und Futterm.	Feste mineral. Brennst.	Erd-/ Mineralöl-erzeugn.	Erze und Metall- abfälle	Eisen, Stahl, NE-Met.	Steine, Erden, Baustoff.	Dünge- mittel	Chem. Erzeugn.	Fahrzeug . Masch.	Übrige Güter	TOTAL	Trocken- güter
1948		447'982	957'066	502'849							709'965	2'617'862	2'115'013
1949		490'160	675'602	546'001							423'015	2'134'778	1'588'777
1950		617'762	1'085'834	707'027							836'502	3'247'125	2'540'098
1951		589'829	1'959'918	810'074							880'275	4'240'096	3'430'022
1952		606'418	1'663'362	843'899							828'950	3'942'629	3'098'730
1953		626'723	1'321'827	805'975							899'218	3'653'743	2'847'768
1954		562'567	1'663'212	884'206							1'015'640	4'125'625	3'241'419
1955		612'255	1'323'821	935'841							1'259'057	4'130'974	3'195'133
1956		657'494	1'871'689	1'213'275							1'125'565	4'868'023	3'654'748
1957		544'453	2'099'407	1'220'485							1'164'193	5'028'538	3'808'053
1958		581'727	1'556'877	1'360'134							1'074'732	4'573'470	3'213'336
1959		569'946	1'469'698	1'220'528							1'289'065	4'549'237	3'328'709
1960		686'218	1'931'298	1'896'267							1'945'801	6'459'584	4'563'317
1961		635'427	1'520'852	1'969'654							2'367'533	6'493'466	4'523'812
1962		681'719	1'495'526	2'030'975							1'599'438	6'787'583	4'756'608
1963		554'136	1'776'337	2'709'260							1'915'701	7'960'212	5'250'952
1964		69'268	1'049'503	2'845'667							2'009'594	6'638'203	3'792'536
1965		519'335	1'125'145	3'387'980							2'248'005	7'954'214	4'566'234
1966		707'782	845'563	3'166'128							2'319'026	8'012'274	4'846'146
1967		705'706	628'849	2'678'298							2'477'467	7'569'644	4'891'346
1968		512'528	543'220	2'986'079							2'376'800	7'488'800	4'502'721
1969		533'581	418'858	3'397'922							2'318'824	7'707'255	4'309'333
1970		628'936	385'701	3'971'072							2'510'574	8'020'322	4'649'250
1971		634'125	180'273	4'175'660							2'152'225	7'925'510	3'749'850
1972		564'020	143'139	4'149'429							1'895'584	7'651'161	3'501'732
1973		624'592	152'665	4'047'930							2'234'002	8'203'931	4'156'001
1974		724'194	272'162	4'434'513							2'521'247	9'053'560	4'619'047
1975		712'093	143'189	4'228'606							2'089'038	7'859'531	3'630'925
1976		831'558	124'051	4'089'442							1'973'579	7'979'728	3'890'286
1977		894'511	154'341	4'710'147							1'864'295	8'635'818	3'925'671
1978		745'622	152'263	4'694'259							1'740'523	8'169'667	3'475'408
1979		541'669	374'488	4'555'474							1'768'240	8'280'285	3'724'811
1980		462'687	398'003	4'592'385							1'167'524	8'762'212	4'169'827
1981		530'247	713'320	3'896'509							1'077'606	8'277'359	4'380'850
1982		510'200	368'010	3'459'909							1'020'876	7'117'111	3'657'202
1983		494'841	280'630	4'005'672							1'128'472	7'629'997	3'624'325
1984		385'857	489'675	4'338'315							1'081'761	8'219'167	3'880'852
1985		371'031	374'274	3'887'103							1'083'055	7'600'568	3'713'465
1986		451'338	561'401	4'606'677							1'122'345	8'631'997	4'025'320
1987		487'317	468'421	4'018'266							1'136'239	7'897'136	3'878'870
1988		447'550	369'055	4'062'169							1'151'033	8'091'448	4'029'279
1989		375'156	257'451	4'264'064							1'181'998	8'578'161	4'314'097
1990		286'542	508'345	4'664'757							1'259'152	8'893'224	4'228'467
1991		280'661	340'358	3'878'971							1'129'132	7'750'616	3'871'645
1992		267'930	121'550	4'397'692							1'598'845	7'938'845	3'541'153
1993		276'080	136'377	4'082'392							1'865'624	7'457'431	3'375'039
1994	243'668	250'121	148'770	4'161'431							1'330'562	7'412'738	3'251'307
1995	394'261	275'114	209'218	3'673'476							1'749'305	7'303'918	3'630'442
1996	254'439	308'332	153'033	3'224'031							1'467'765	6'283'396	3'059'365
1997	293'768	286'372	40'919	3'880'892							1'447'443	7'002'443	3'121'551
1998	298506	343'734	61'187	4'133'571							1'436'243	7'420'316	3'286'745
1999	268'740	339'232	54'569	3'423'237							1'537'581	6'701'589	3'278'352
2000	349'658	353'112	247'079	3'870'435							1'561'905	7'651'800	3'781'365
2001	298'782	369'891	165'017	4'410'762							1'551'622	7'795'965	3'385'203
2002	357'119	356'301	116'877	4'114'304							1'550'425	7'401'938	3'287'634
2003	372'776	398'213	87'283	3'309'694							1'550'988	6'088'850	2'986'605
2004	333'468	357'069	174'487	3'099'977							1'579'931	6'451'669	3'120'915
2005	205'852	330'906	98'041	3'433'342							1'702'114	5'484'845	2'907'529
2006	283'573	345'531	144'943	2'846'446							1'659'596	6'544'748	3'075'843
2007	365'471	448'048	222'185	2'561'276							1'714'598	6'607'758	3'447'193
2008	366'969	438'275	156'474	2'710'684							1'656'472	6'560'422	3'359'673
2009	266'689	371'673	176'034	3'172'240							1'499'814	5'529'914	2'394'421
2010	248'843	382'807	132'642	2'793'331							1'566'055	90'416	2'748'153
2011	337'922	415'357	83'534	2'215'518							1'373'550	72'739	2'498'234
2012	306'095	454'242	104'066	3'436'420							1'262'012	96'332	2'763'375
2013	317'372	492'052	111'711	2'992'663							1'261'132	103'467	2'739'938

SCHWEIZERISCHE RHEINHÄFEN

Abgangsverkehr nach Gütergruppen

Jahr	Landw. Erzeugn.	Nahrungs- und Futterm.	Feste mineral. Brennst.	Erdöl, Mineralöl-Erzeugn.	Erze und Metallabfälle	Eisen, Stahl, NE-Met.	Steine, Erden, Baustoff.	Dünge-mittel	Chem. Erzeugn.	Fahrzeug. Masch.	Übrige Güter	TOTAL
1948		13'379			58'113				13'292		76'620	161'404
1949		6'680			31'714				7'654		71'194	117'242
1950		29'183			73'180				19'914		131'015	253'292
1951		95'320			161'226				20'386		75'385	352'317
1952		56'785			157'799				19'167		62'345	296'096
1953		55'849			106'506				18'377		88'596	269'328
1954		74'707			171'745				38'213		85'932	370'597
1955		131'508			145'631				55'543		123'764	456'446
1956		103'586			189'734				34'740		89'138	417'198
1957		71'465			194'072				24'893		77'391	367'821
1958		73'756			118'940				20'014		81'833	294'543
1959		87'660			84'574				40'702		136'178	349'114
1960		67'568			222'837				55'506		156'255	502'166
1961		63'040			119'683				40'023		101'281	324'027
1962		54'751			75'371				43'360		63'677	293'985
1963		45'778			93'439				54'529		63'941	320'635
1964		69'268			65'025				67'807		130'845	397'320
1965		208'459			103'857				66'453		167'841	661'036
1966		63'917			32'463				41'908		167'596	394'882
1967		55'665			14'705				49'250		144'670	342'376
1968		35'393			13'172				40'619		144'284	319'813
1969		38'022			12'828				30'473		130'643	309'353
1970		37'020			20'673				20'343		134'593	304'504
1971		40'414			17'662				9'062		156'473	276'764
1972		36'729			14'973				37'737		144'695	274'425
1973		27'071			14'223				21'769		137'303	244'112
1974		24'779			21'320				29'800		134'738	286'632
1975		21'960			17'404				39'489		194'768	329'730
1976		15'239			20'550				11'153		212'116	312'210
1977		13'535			19'408				3'437		295'536	372'683
1978		13'343			23'178				4'322		430'966	516'682
1979		13'154			26'828				11'175		206'813	301'382
1980					20'464						48'999	51'831
1981					29'276						44'127	45'100
1982					45'924						55'038	48'096
1983					32'985						44'839	200'513
1984					35'726						25'912	273'844
1985					30'132						31'099	221'112
1986					39'430						25'657	138'804
1987					50'871						24'537	121'426
1988					44'394						32'060	184'615
1989					43'246						26'429	91'688
1990					45'396						21'492	138'949
1991					42'451						29'833	413'751
1992		532	3'410	255'074	36'924	160'769	4'330	4'557	3'652	29'595	93'222	592'065
1993		904	19	410'288	31'339	199'403	1'176	0	8'086	39'835	134'901	825'951
1994	2'365	15'043	19	386'105	37'311	115'393	12'467	5'596	109'314	64'770	45'653	794'036
1995	3'662	30'629	6'589	226'213	69'603	96'209	12'851	7'945	110'504	104'987	51'984	721'176
1996	3'204	36'665	3'340	348'239	79'764	85'427	8'655	11'381	131'800	106'954	61'458	876'887
1997	7'107	46'612	19	186'974	109'199	137'733	6'451	2'423	134'467	133'351	73'150	837'486
1998	10'300	43'642	0	85'282	64'818	146'179	8'908	10'088	99'168	140'776	79'270	688'431
1999	4'416	42'557	0	195'681	46'136	131'785	14'798	0	101'069	132'366	77'453	746'261
2000	9'177	48'758	0	286'812	70'572	120'099	6'186	4'707	129'270	137'445	80'907	893'933
2001	2'211	38'258	0	232'161	70'876	133'743	421	2'652	150'573	134'629	72'659	838'183
2002	2'740	38'926	0	201'459	63'734	126'193	1'940	10'315	171'612	160'777	74'999	852'695
2003	6'627	46'049	0	234'669	39'747	93'734	10'778	6'891	177'656	167'783	90'555	874'489
2004	17'120	64'443	0	280'177	29'333	105'484	25'425	0	203'231	190'626	108'898	1'024'737
2005	15'490	73'437	0	173'991	28'779	77'444	67'659	232	196'798	172'381	113'780	919'991
2006	15'598	72'341	0	181'075	43'791	93'000	14'605	447	119'589	175'271	111'676	827'393
2007	18'652	95'284	0	255'207	39'840	155'353	9'701	401	196'274	195'455	133'594	1'099'761
2008	10'725	102'142	25	333'857	36'944	136'824	29'056	0	207'178	163'171	121'983	1'141'905
2009	7'216	119'809	0	259'473	26'292	75'571	26'896	73	133'529	132'617	95'551	877'027
2010	6'359	142'789	0	281'694	69'200	76'788	78'692	2'316	73'140	134'912	110'902	976'792
2011	7'462	91'666	0	264'814	60'284	75'661	136'732	31	134'448	95'340	97'798	964'236
2012	12'654	69'152	0	152'380	71'587	109'032	204'972	16	123'069	145'618	122'273	1'010'753
2013	18'087	74'717	0	311'074	89'238	70'541	137'954	39	146'476	130'521	118'436	1'097'083

Ankunftsverkehr Trocken- und Flüssiggüter



Zufuhr	Landw. Erzeugnisse GRUPPE 0		Nahrungs und Futtermittel GRUPPE 1		Feste min. Brennstoffe GRUPPE 2		Erd.,Miner., Oel-Erzeugnisse GRUPPE 3		Erzeugnisse Metallabbau GRUPPE 4		Eisen, Stahl, Ne. Met GRUPPE 5	
	2013	2012	2013	2012	2013	2012	2013	2012	2013	2012	2013	2012
Januar	23,214	22,752	44,365	37,243	1,045	6,195	268,744	280,858	4,290	0	33,092	37,770
Februar	20,955	12,438	31,181	37,185	2,225	13,881	157,598	278,214	3,415	0	34,625	31,520
März	47,589	16,725	39,045	38,041	3,643	12,136	224,673	384,698	4,133	2,529	36,293	38,900
April	27,117	22,996	35,342	35,859	14,657	11,280	213,409	298,449	8,670	4,068	29,722	40,289
Mai	34,957	58,564	41,714	35,855	2,552	10,161	264,605	326,445	3,150	0	28,002	42,583
Juni	16,350	15,861	29,801	32,706	8,060	2,476	227,684	332,497	0	0	26,350	27,522
Juli	27,079	13,872	42,820	38,009	6,538	11,055	248,230	354,979	2,001	0	27,371	27,026
August	6,381	9,318	49,993	41,542	3,284	1,407	233,728	225,427	521	1,046	25,946	28,482
September	15,709	30,293	44,178	36,746	17,741	6,355	209,787	203,355	1,016	6,597	30,236	36,952
Oktober	25,588	40,481	35,969	50,192	17,006	10,776	379,176	213,875	5,825	3,176	32,164	40,378
November	42,177	51,786	54,131	36,850	14,763	6,894	341,375	244,112	6,188	1,153	28,527	25,374
Dezember	30,256	11,009	43,513	34,014	20,197	11,450	223,654	293,511	3,852	2,060	17,090	29,063
Total	317,372	306,095	492,052	454,242	111,711	104,066	2,992,663	3,436,420	43,061	20,629	349,418	405,859
Zufuhr	Steine, Erden, Baust. GRUPPE 6		Düngemittel GRUPPE 7		Chemische Erzeugnisse GRUPPE 8		Fahrzeuge, Maschinen GRUPPE 9		Übrige Güter GRUPPE 99		Totalverkehr	
	2013	2012	2013	2012	2013	2012	2013	2012	2013	2012	2013	2012
Januar	35,027	66,774	10,286	9,616	21,997	17,103	10,273	11,853	10,656	9,726	462,989	499,890
Februar	47,817	41,909	4,058	13,659	17,938	23,272	7,971	11,272	8,875	9,422	336,658	472,772
März	61,672	91,980	7,864	7,729	21,138	21,968	10,088	8,023	9,508	7,917	465,646	630,646
April	61,991	58,225	10,768	5,362	24,443	18,719	6,678	7,930	8,913	9,376	441,710	512,553
Mai	63,574	93,825	5,034	9,548	26,156	21,925	8,769	9,912	10,313	10,016	488,826	618,834
Juni	71,071	81,859	3,689	7,706	20,214	18,889	7,758	6,545	9,468	7,838	420,445	533,899
Juli	87,509	91,385	14,471	16,188	23,629	28,846	10,463	7,904	11,519	10,530	501,630	599,794
August	61,335	58,591	14,127	15,916	24,738	22,298	7,607	7,699	9,893	9,454	437,553	421,180
September	76,245	63,290	21,931	12,012	21,116	27,456	9,616	7,031	10,452	8,279	458,027	438,366
Oktober	83,359	63,750	15,133	18,226	19,998	21,595	9,399	6,430	9,892	9,514	633,509	478,393
November	81,690	79,694	12,202	15,714	21,676	20,013	6,980	6,017	9,291	7,916	619,000	495,523
Dezember	87,027	72,038	5,763	11,662	18,089	19,928	7,865	5,716	9,302	7,494	466,608	497,945
Total	818,317	863,320	125,326	143,338	261,132	262,012	103,467	96,332	118,082	107,482	5,732,601	6,199,795
Zusammenfassung Januar - Dezember												
Total Zufuhr 2013			5,732,601	Total Abfuhr 2013			1,097,083	Totalverkehr 2013			6,829,684	
Total Zufuhr 2012			6,199,795	Total Abfuhr 2012			1,010,753	Totalverkehr 2012			7,210,548	
+/- zum Vergleich in %			-7.54	+/- zum Vorjahr in %			7.87	+/- zum Vergleich in %			-5.28	

Abfuhr	Landw. Erzeugnisse GRUPPE 0		Nahrungs und Futtermittel GRUPPE 1		Feste min. Brennstoffe GRUPPE 2		Erd.,Miner., Oel-Erzeugnisse GRUPPE 3		Erzeugnisse Metallabbau GRUPPE 4		Eisen, Stahl, Ne. Met GRUPPE 5	
	2013	2012	2013	2012	2013	2012	2013	2012	2013	2012	2013	2012
Januar	2,012	1,872	3,952	4,425	0	0	33,936	1,683	4,831	7,844	3,300	7,305
Februar	870	144	6,129	9,200	0	0	29,462	1,341	8,427	3,172	6,471	16,382
März	779	1,958	11,104	6,531	0	0	28,264	71	7,128	4,560	4,952	10,211
April	1,069	1,514	5,104	4,314	0	0	29,774	4,404	10,764	2,808	4,794	3,298
Mai	1,627	584	4,184	7,386	0	0	27,242	2,979	5,510	5,574	7,477	7,306
Juni	1,263	1,184	3,772	7,192	0	0	28,255	3,927	7,126	7,419	9,011	6,219
Juli	1,105	1,226	4,590	4,817	0	0	36,224	6,115	11,460	6,368	5,847	4,758
August	317	1,240	5,587	5,599	0	0	26,977	21,501	8,323	5,204	5,972	7,248
September	1,048	748	5,542	5,132	0	0	17,289	21,711	7,424	6,303	6,936	11,237
Oktober	483	1,275	10,582	5,198	0	0	28,521	26,790	5,957	9,158	6,829	15,691
November	4,961	555	8,114	4,751	0	0	17,926	37,046	4,997	7,126	5,428	13,954
Dezember	2,553	354	6,057	4,607	0	0	7,204	24,812	7,291	6,051	3,524	5,423
Total	18,087	12,654	74,717	69,152	0	0	311,074	152,380	89,238	71,587	70,541	109,032
Abfuhr	Steine, Erden, Baust. GRUPPE 6		Düngemittel GRUPPE 7		Chemische Erzeugnisse GRUPPE 8		Fahrzeuge, Maschinen GRUPPE 9		Übrige Güter GRUPPE 99		Totalverkehr	
	2013	2012	2013	2012	2013	2012	2013	2012	2013	2012	2013	2012
Januar	6,150	23,020	0	0	8,191	10,875	10,120	9,469	8,218	7,573	80,710	74,066
Februar	7,210	15,735	0	16	10,179	7,871	8,111	9,675	8,987	8,891	85,846	72,427
März	10,848	21,781	0	0	14,732	13,244	13,723	12,621	11,666	12,587	103,196	83,564
April	15,550	13,669	0	0	9,811	8,019	10,113	13,716	9,280	8,557	96,259	60,299
Mai	17,224	11,770	0	0	15,877	9,284	13,186	11,796	10,037	9,615	102,364	66,294
Juni	11,254	17,064	0	0	8,735	8,090	10,276	15,483	7,948	11,099	87,640	77,677
Juli	4,605	24,915	0	0	13,131	13,201	12,631	15,360	10,224	12,122	99,817	88,882
August	14,600	19,161	19	0	11,653	10,009	8,653	10,132	10,161	12,064	92,262	92,158
September	9,731	14,225	20	0	13,083	11,531	9,770	10,914	9,797	10,971	80,640	92,772
Oktober	19,335	21,495	0	0	12,131	12,051	10,575	11,283	11,350	9,874	105,763	112,815
November	10,056	14,172	0	0	15,513	9,598	12,385	11,355	10,756	9,446	90,136	108,003
Dezember	11,391	7,965	0	0	13,440	9,296	10,978	13,814	10,012	9,474	72,450	81,796
Total	137,954	204,972	39	16	146,476	123,069	130,521	145,618	118,436	122,273	1,097,083	1,010,753
Zusammenfassung Januar - Dezember												
Total Zufuhr 2013			5,732,601		Total Abfuhr 2013			1,097,083		Totalverkehr 2013		6,829,684
Total Zufuhr 2012			6,199,795		Total Abfuhr 2012			1,010,753		Totalverkehr 2012		7,210,548
+/- zum Vergleich in %			-7.54		+/- zum Vorjahr in %			7.87		+/- zum Vergleich in %		-5.28