

Jahresstatistik der Schweizerischen Rheinhäfen

Rheinhafenverkehr nach Gütergruppen 2019

Ankunftsverkehr nach Gütergruppen
Abgangsverkehr nach Gütergruppen
Grafik Ankunftsverkehr Trocken- und Flüssiggüter
Zufuhr nach Gütergruppen
Abfuhr nach Gütergruppen

SCHWEIZERISCHE RHEINHÄFEN

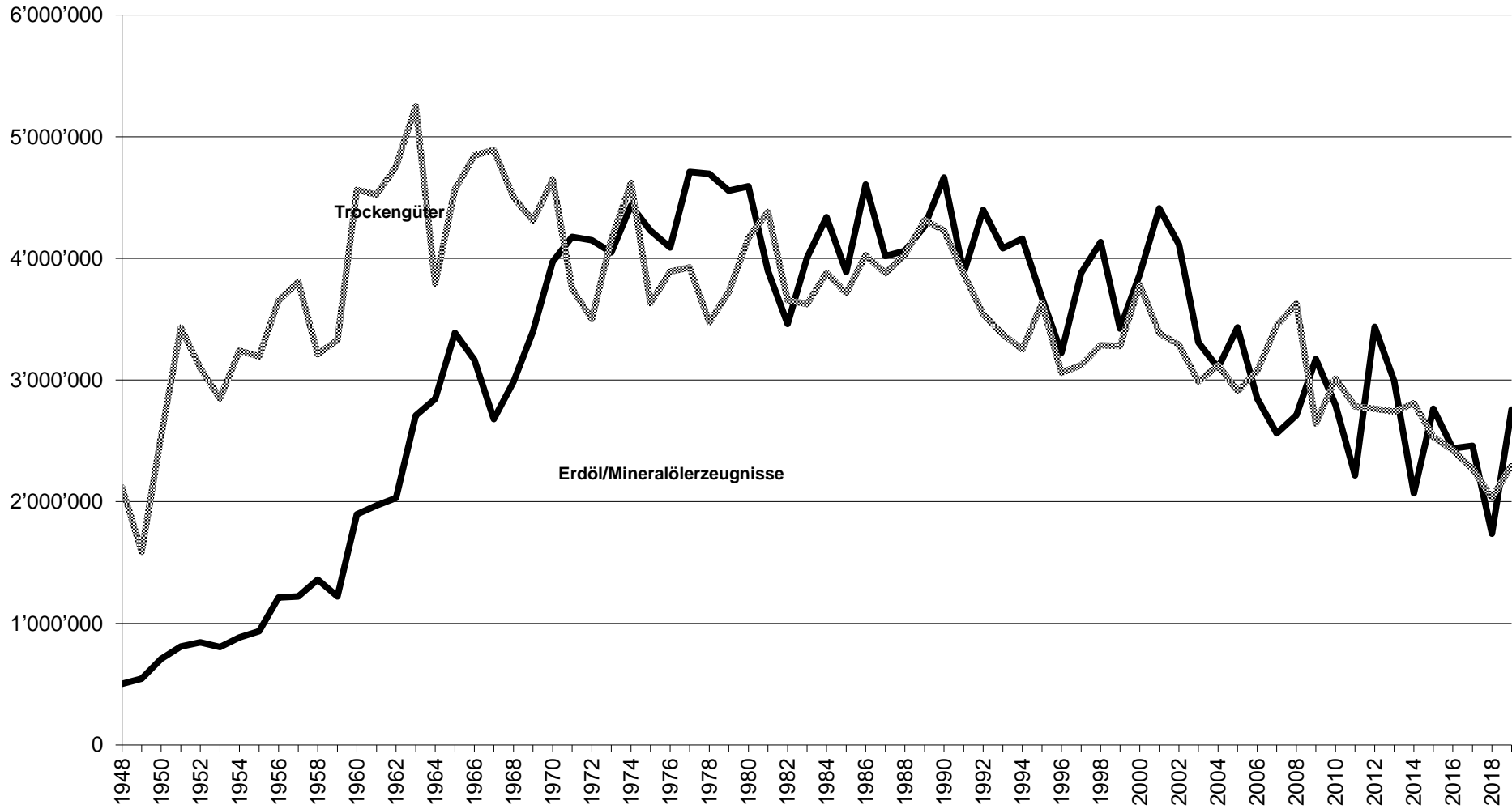
Abgangsverkehr nach Gütergruppen

Jahr	Landw. Erzeugn.	Nahrungs- und Futterm.	Feste mineral. Brennst.	Erdöl, Mineralöl-Erzeugn.	Erze und Metallabfälle	Eisen, Stahl, NE-Met.	Steine, Erden, Baustoff.	Dünge-mittel	Chem. Erzeugn.	Fahrzeug . Masch.	Übrige Güter	TOTAL	
1948		13'379			58'113				13'292		76'620	161'404	
1949		6'680			31'714				7'654		71'194	117'242	
1950		29'183			73'180				19'914		131'015	253'292	
1951		95'320			161'226				20'386		75'385	352'317	
1952		56'785			157'799				19'167		62'345	296'096	
1953		55'849			106'506				18'377		88'596	269'328	
1954		74'707			171'745				38'213		85'932	370'597	
1955		131'508			145'631				55'543		123'764	456'446	
1956		103'586			189'734				34'740		89'138	417'198	
1957		71'465			194'072				24'893		77'391	367'821	
1958		73'756			118'940				20'014		81'833	294'543	
1959		87'660			84'574				40'702		136'178	349'114	
1960		67'568			222'837				55'506		156'255	502'166	
1961		63'040			119'683				40'023		101'281	324'027	
1962		54'751			75'371				43'360		63'677	293'985	
1963		45'778			93'439				54'529		62'948	320'635	
1964		69'268			65'025				67'807		64'375	397'320	
1965		208'459			103'857				66'453		114'426	661'036	
1966		63'917			32'463				41'908		88'998	394'882	
1967		55'665			14'705				49'250		78'086	342'376	
1968		35'393			13'172				40'619		86'345	319'813	
1969		38'022			12'828				30'473		97'387	309'353	
1970		37'020			20'673				20'343		91'875	304'504	
1971		40'414			17'662				9'062		53'153	276'764	
1972		36'729			14'973				37'737		40'291	274'425	
1973		27'071			14'223				21'769		43'746	244'112	
1974		24'779			21'320				29'800		75'995	286'632	
1975		21'960			17'404				39'489		56'109	329'730	
1976		15'239			20'550				11'153		53'152	312'210	
1977		13'535			19'408				3'437		40'767	372'683	
1978		13'343			23'178				4'322		44'873	516'682	
1979		13'154			26'828				11'175		206'813	301'382	
1980					20'464	136'001			48'999		51'831	257'295	
1981					29'276	140'254			44'127		45'100	258'757	
1982					45'924	105'023			55'038		48'096	254'081	
1983					32'985	254'497			44'839		200'513	532'834	
1984					35'726	216'636			25'912		273'844	552'118	
1985					30'132	218'299			31'099		221'112	500'642	
1986					39'430	151'451			25'657		138'804	355'342	
1987					50'871	113'962			24'537		121'426	310'796	
1988					44'394	100'275			32'060		184'615	361'344	
1989					43'246	105'638			26'429		91'688	267'001	
1990					45'396	95'477			21'492		138'949	301'314	
1991					42'451	116'750			29'833		413'751	602'785	
1992		532	3'410	255'074	36'924	160'769	4'330	4'557	3'652		29'595	93'222	592'065
1993		904	19	410'288	31'339	199'403	1'176	0	8'086		39'835	134'901	825'951
1994	2'365	15'043	19	386'105	37'311	115'393	12'467	5'596	109'314	64'770	45'653	794'036	
1995	3'662	30'629	6'589	226'213	69'603	96'209	12'851	7'945	110'504	104'987	51'984	721'176	
1996	3'204	36'665	3'340	348'239	79'764	85'427	8'655	11'381	131'800	106'954	61'458	876'887	
1997	7'107	46'612	19	186'974	109'199	137'733	6'451	2'423	134'467	133'351	73'150	837'486	
1998	10'300	43'642	0	85'282	64'818	146'179	8'908	10'088	99'168	140'776	79'270	688'431	
1999	4'416	42'557	0	195'681	46'136	131'785	14'798	0	101'069	132'366	77'453	746'261	
2000	9'177	48'758	0	286'812	70'572	120'099	6'186	4'707	129'270	137'445	80'907	893'933	
2001	2'211	38'258	0	232'161	70'876	133'743	421	2'652	150'573	134'629	72'659	838'183	
2002	2'740	38'926	0	201'459	63'734	126'193	1'940	10'315	171'612	160'777	74'999	852'695	
2003	6'627	46'049	0	234'669	39'747	93'734	10'778	6'891	177'656	167'783	90'555	874'489	
2004	17'120	64'443	0	280'177	29'333	105'484	25'425	0	203'231	190'626	108'898	1'024'737	
2005	15'490	73'437	0	173'991	28'779	77'444	67'659	232	196'798	172'381	113'780	919'991	
2006	15'598	72'341	0	181'075	43'791	93'000	14'605	447	119'589	175'271	111'676	827'393	
2007	18'652	95'284	0	255'207	39'840	155'353	9'701	401	196'274	195'455	133'594	1'099'761	
2008	10'725	102'142	25	333'857	36'944	136'824	29'056	0	207'178	163'171	121'983	1'141'905	
2009	7'216	119'809	0	259'473	26'292	75'571	26'896	73	133'529	132'941	95'563	877'363	
2010	6'359	142'789	0	281'694	69'200	76'788	78'692	2'316	73'140	134'912	110'902	976'792	
2011	7'462	91'666	0	264'814	60'284	76'555	136'732	31	134'448	95'340	97'798	965'130	
2012	12'654	69'152	0	152'380	71'587	109'032	204'972	16	123'069	145'618	122'273	1'010'753	
2013	18'087	74'717	0	311'074	89'238	70'541	137'954	39	146'476	130'521	118'436	1'097'083	
2014	25'319	68'403	0	247'516	80'862	72'110	191'548	0	147'290	146'813	124'717	1'104'578	
2015	32'585	62'097	22	281'117	62'932	52'361	177'069	2	128'644	131'333	111'092	1'039'254	
2016	36'304	89'767	0	211'000	75'568	41'058	141'256	1'311	144'951	156'419	136'051	1'033'685	
2017	50'012	90'733	0	160'235	84'248	41'952	179'437	207	159'551	153'850	140'798	1'061'023	
2018	44'707	74'179	0	65'168	71'643	58'128	242'435	0	120'981	126'098	126'197	929'536	
2019	51'136	72'088	0	59'017	121'464	31'376	308'284	43	125'422	120'218	122'127	1'011'175	

SCHWEIZERISCHE RHEINHÄFEN
Ankunftsverkehr nach Gütergruppen

Jahr	Landw. Erzeugn.	Nahrungs- und Futterm.	Feste mineral. Brennst.	Erd-/Mineralöl-erzeugn.	Erze und Metall- abfälle	Eisen, Stahl, NE-Met.	Steine, Erden, Baustoff.	Dünge-mittel	Chem. Erzeugn.	Fahrzeug. Masch.	Übrige Güter	TOTAL	Trocken- güter
1948		447'982	957'066	502'849							709'965	2'617'862	2'115'013
1949		490'160	675'602	546'001							423'015	2'134'778	1'588'777
1950		617'762	1'085'834	707'027							836'502	3'247'125	2'540'098
1951		589'829	1'959'918	810'074							880'275	4'240'096	3'430'022
1952		606'418	1'663'362	843'899							828'950	3'942'629	3'098'730
1953		626'723	1'321'827	805'975							899'218	3'653'743	2'847'768
1954		562'567	1'663'212	884'206							1'015'640	4'125'625	3'241'419
1955		612'255	1'323'821	935'841							1'259'057	4'130'974	3'195'133
1956		657'494	1'871'689	1'213'275							1'125'565	4'868'023	3'654'748
1957		544'453	2'099'407	1'220'485							1'164'193	5'028'538	3'808'053
1958		581'727	1'556'877	1'360'134							1'074'732	4'573'470	3'213'336
1959		569'946	1'469'698	1'220'528							1'289'065	4'549'237	3'328'709
1960		686'218	1'931'298	1'896'267							1'945'801	6'459'584	4'563'317
1961		635'427	1'520'852	1'969'654							2'367'533	6'493'466	4'523'812
1962		681'719	1'495'526	2'030'975							1'599'438	6'787'583	4'756'608
1963		554'136	1'776'337	2'709'260							1'915'701	7'960'212	5'250'952
1964		69'268	1'049'503	2'845'667							2'009'594	6'638'203	3'792'536
1965		519'335	1'125'145	3'387'980							2'248'005	7'954'214	4'566'234
1966		707'782	845'563	3'166'128							2'319'026	8'012'274	4'846'146
1967		705'706	628'849	2'678'298							2'477'467	7'569'644	4'891'346
1968		512'528	543'220	2'986'079							2'376'800	7'488'800	4'502'721
1969		533'581	418'858	3'397'922							2'318'824	7'707'255	4'309'333
1970		628'936	385'701	3'971'072							2'510'574	8'620'322	4'649'250
1971		634'125	180'273	4'175'660							2'152'225	7'925'510	3'749'850
1972		564'020	143'139	4'149'429							1'895'584	7'651'161	3'501'732
1973		624'592	152'665	4'047'930							2'234'002	8'203'931	4'156'001
1974		724'194	272'162	4'434'513							2'521'247	9'053'560	4'619'047
1975		712'093	143'189	4'228'606							2'089'038	7'859'531	3'630'925
1976		831'558	124'051	4'089'442							1'973'579	7'979'728	3'890'286
1977		894'511	154'341	4'710'147							1'864'295	8'635'818	3'925'671
1978		745'622	152'263	4'694'259							1'740'523	8'169'667	3'475'408
1979		541'669	374'488	4'555'474							1'768'240	8'280'285	3'724'811
1980		462'687	398'003	4'592'385	467'077	1'122'239	552'297				1'167'524	8'762'212	4'169'827
1981		530'247	713'320	3'896'509	548'037	946'250	565'390				1'077'606	8'277'359	4'380'850
1982		510'200	368'010	3'459'909	265'420	895'105	597'591				1'020'876	7'117'111	3'657'202
1983		494'841	280'630	4'005'672	144'480	926'821	649'081				1'128'472	6'299'997	3'624'325
1984		385'857	489'675	4'338'315	192'448	1'071'807	659'304				1'081'761	8'219'167	3'880'852
1985		371'031	374'274	3'887'103	223'035	1'061'934	600'136				1'083'055	7'600'568	3'713'465
1986		451'338	561'401	4'606'677	116'061	1'252'678	521'497				1'122'345	8'631'997	4'025'320
1987		487'317	468'421	4'018'266	42'344	1'136'181	608'368				1'136'239	7'897'136	3'878'870
1988		447'550	369'055	4'062'169	36'730	1'321'684	703'227				1'151'033	8'091'448	4'029'279
1989		375'156	257'451	4'264'064	231'296	1'402'510	865'686				1'181'998	8'578'161	4'314'097
1990		286'542	508'345	4'664'757	131'468	1'409'760	633'200				1'259'152	8'893'224	4'228'467
1991		280'661	340'358	3'878'971	190'355	1'266'753	664'386				1'129'132	7'750'616	3'871'645
1992		267'930	121'550	4'397'692	285'980	1'222'169	715'905	169'835	150'639	9'121	598'024	7'938'845	3'541'153
1993		276'080	136'377	4'082'392	250'601	1'181'609	656'245	186'562	125'261	4'253	558'051	7'457'431	3'375'039
1994	243'668	250'121	148'770	4'161'431	97'229	1'110'802	824'709	173'586	346'576	13'305	42'541	7'412'738	3'251'307
1995	394'261	275'114	209'218	3'673'476	53'153	1'201'720	894'746	174'930	358'875	20'399	48'026	7'303'918	3'630'442
1996	254'439	308'332	153'033	3'224'031	41'234	899'363	784'233	146'765	381'799	34'007	56'160	6'283'396	3'059'365
1997	293'768	286'372	40'919	3'880'892	93'875	1'207'514	609'798	149'647	334'443	37'105	68'110	7'002'443	3'121'551
1998	298'506	343'734	61'187	4'133'571	101'797	1'130'600	640'914	144'741	436'243	49'202	79'821	7'420'316	3'286'745
1999	268'740	339'232	54'569	3'423'237	75'275	1'183'367	538'675	155'986	537'581	54'827	70'100	6'701'589	3'278'352
2000	349'658	353'112	247'079	3'870'435	69'726	1'283'723	629'258	152'875	561'905	52'919	81'110	7'651'800	3'781'365
2001	298'782	369'891	165'017	4'410'762	70'569	1'103'140	524'735	165'230	551'622	58'096	78'121	7'795'965	3'385'203
2002	357'119	356'301	116'877	4'114'304	92'709	1'031'548	502'955	159'716	550'425	42'680	77'304	7'401'938	3'287'634
2003	372'776	398'213	87'283	3'309'694	131'300	698'809	411'227	155'098	608'850	49'157	73'892	6'296'299	2'986'605
2004	333'468	357'069	174'487	3'099'977	135'962	727'289	452'590	157'931	645'169	51'204	85'746	6'220'892	3'120'915
2005	205'852	330'906	98'041	3'433'342	78'461	675'295	484'305	185'072	702'114	54'845	92'638	6'340'871	2'907'529
2006	283'573	345'531	144'943	2'846'446	113'357	769'218	438'986	160'596	654'474	74'682	90'483	5'922'289	3'075'843
2007	365'471	448'048	222'185	2'561'276	72'196	837'106	498'265	171'459	660'758	68'907	102'798	6'008'469	3'447'193
2008	388'505	470'494	156'474	2'710'684	55'821	811'766	775'939	148'546	656'472	56'600	106'413	6'337'714	3'627'030
2009	288'722	404'345	176'034	3'172'240	36'445	398'164	585'873	113'294	499'814	55'299	83'450	5'813'680	2'641'440
2010	267'106	415'851	132'642	2'793'331	34'492	624'017	636'449	142'019	566'055	90'416	101'949	5'804'327	3'010'996
2011	363'751	444'726	83'534	2'215'518	31'689	438'210	759'091	124'136	373'550	73'954	90'396	4'998'555	2'783'037
2012	306'095	454'242	104'066	3'436'420	20'629	405'859	863'320	143'338	262'012	96'332	107'482	6'199'795	2'763'375
2013	317'372	492'052	111'711	2'992'663	43'061	349'418	818'317	125'326	261'132	103'467	118'082	5'732'601	2'739'938
2014	302'404	460'027	28'462	2'069'340	60'801	354'737	1'002'562	129'234	235'929	112'255	121'761	4'877'512	2'808'172
2015	268'837	450'466	65'035	2'764'242	69'309	332'869	806'832	116'680	199'129	104'221	116'964	5'294'584	2'530'342
2016	309'109	428'565	31'175	2'438'441	31'717	289'068	784'550	124'993	201'327	99'528	124'345	4'862'818	2'424'377
2017	234'137	409'937	37'815	2'457'975	12'627	314'483	704'561	124'696	184'895	111'168	136'837	4'729'131	2'271'156
2018	220'121	384'245	795	1'736'805	19'126	185'614	727'678	102'737	150'995	103'512	136'817	3'768'445	2'031'640
2019	197'564	392'180	18'452	2'756'555	25'143	227'203	789'171	145'487	258'530	107'904	135'870	5'054'059	2'297'504

Ankunftsverkehr Trocken- und Flüssiggüter



Abfuhr	Landw. Erzeugnisse GRUPPE 0		Nahrungs und Futtermittel GRUPPE 1		Feste min. Brennstoffe GRUPPE 2		Erd.,Miner., Oel-Erzeugnisse GRUPPE 3		Erzeugnisse Metallabbau GRUPPE 4		Eisen, Stahl, Ne. Met GRUPPE 5	
	2019	2018	2019	2018	2019	2018	2019	2018	2019	2018	2019	2018
Januar	4,406	3,834	4,100	5,199	0	0	11,705	10,858	8,969	9,206	795	3,072
Februar	6,515	6,182	5,735	6,140	0	0	17,753	17,008	9,501	7,855	4,341	2,961
März	8,656	7,672	7,087	7,231	0	0	1,480	7,323	8,810	2,908	5,204	3,994
April	6,117	6,905	5,160	6,759	0	0	3,253	6,653	9,537	7,988	742	5,529
Mai	5,868	9,663	6,751	7,336	0	0	54	11,734	7,835	4,647	4,294	9,773
Juni	3,878	4,979	5,477	8,782	0	0	73	7,444	11,500	12,138	1,432	6,522
Juli	1,962	2,773	5,986	7,697	0	0	0	2,513	10,990	6,592	921	4,995
August	3,491	353	6,990	6,566	0	0	0	10	14,787	4,056	653	9,112
September	2,826	209	6,216	6,324	0	0	239	59	10,735	2,589	2,637	2,461
Oktober	3,398	563	5,870	3,209	0	0	6,188	0	9,499	2,728	519	4,039
November	1,989	96	6,347	4,027	0	0	7,214	34	9,387	2,448	3,737	1,159
Dezember	2,030	1,478	6,369	4,909	0	0	11,058	1,532	9,914	8,488	6,101	4,511
Total	51,136	44,707	72,088	74,179	0	0	59,017	65,168	121,464	71,643	31,376	58,128
Abfuhr	Steine, Erden, Baust. GRUPPE 6		Düngemittel GRUPPE 7		Chemische Erzeugnisse GRUPPE 8		Fahrzeuge, Maschinen GRUPPE 9		Übrige Güter GRUPPE 99		Totalverkehr	
	2019	2018	2019	2018	2019	2018	2019	2018	2019	2018	2019	2018
Januar	22,875	10,976	23	0	8,904	10,993	6,868	10,633	8,641	10,006	77,286	74,777
Februar	26,971	17,865	0	0	11,662	16,705	9,308	14,755	10,174	14,059	101,960	103,530
März	38,618	30,181	0	0	8,935	12,344	12,361	16,183	12,288	15,782	103,439	103,618
April	33,301	38,633	0	0	9,870	12,358	8,809	11,381	9,561	11,447	86,350	107,653
Mai	35,261	27,106	0	0	10,704	14,376	11,944	13,478	11,333	15,198	94,044	113,311
Juni	29,857	30,457	0	0	9,963	11,654	10,447	15,436	10,373	14,826	83,000	112,238
Juli	29,280	28,931	0	0	8,923	11,025	10,512	11,672	10,296	11,975	78,870	88,173
August	18,676	10,438	20	0	11,082	5,332	8,736	7,887	11,390	9,575	75,825	53,329
September	12,664	13,396	0	0	12,740	5,666	7,251	7,845	8,914	9,118	64,222	47,667
Oktober	37,221	15,732	0	0	9,822	4,487	10,723	6,299	9,789	4,149	93,029	41,206
November	6,102	3,725	0	0	10,063	280	12,371	2,985	9,930	3,981	67,140	18,735
Dezember	17,458	14,995	0	0	12,754	15,761	10,888	7,544	9,438	6,081	86,010	65,299
Total	308,284	242,435	43	0	125,422	120,981	120,218	126,098	122,127	126,197	1,011,175	929,536
Zusammenfassung Januar - Dezember												
Total Zufuhr 2019			5,054,059	Total Abfuhr 2019			1,011,175	Totalverkehr 2019			6,065,234	
Total Zufuhr 2018			3,768,445	Total Abfuhr 2018			929,536	Totalverkehr 2018			4,697,981	
+/- zum Vergleich in %			25.44	+/- zum Vorjahr in %			8.07	+/- zum Vergleich in %			22.54	

Zufuhr	Landw. Erzeugnisse GRUPPE 0		Nahrungs und Futtermittel GRUPPE 1		Feste min. Brennstoffe GRUPPE 2		Erd., Miner., Oel-Erzeugnisse GRUPPE 3		Erzeugnisse Metallabbau GRUPPE 4		Eisen, Stahl, Ne. Met GRUPPE 5	
	2019	2018	2019	2018	2019	2018	2019	2018	2019	2018	2019	2018
Januar	16,108	14,563	46,749	33,359	0	0	176,661	185,600	22	0	20,452	25,001
Februar	24,344	24,932	38,271	32,386	0	12	236,045	208,888	2,131	66	24,209	23,137
März	17,708	21,252	38,210	29,382	0	20	271,622	125,585	2,305	76	13,615	19,588
April	15,330	23,698	30,554	41,718	0	108	200,869	218,716	2,261	0	19,886	16,988
Mai	12,500	22,437	33,778	45,083	6,933	187	275,800	180,948	5,828	2,775	25,394	21,289
Juni	6,897	18,285	25,613	42,821	2,672	12	313,309	160,568	2,321	2,208	25,159	16,731
Juli	10,055	11,366	37,808	37,526	3,037	0	309,887	183,802	3,500	2,325	13,224	16,058
August	23,357	9,810	26,140	25,571	0	0	234,276	96,181	2,237	127	8,192	12,118
September	25,763	23,298	32,599	27,537	0	0	143,229	77,303	111	4,703	15,567	14,596
Oktober	13,562	16,270	26,218	22,301	1,954	0	190,963	86,032	2,007	2,276	24,156	10,258
November	21,780	11,362	29,111	23,028	0	456	176,459	74,165	2,291	1,845	23,902	2,284
Dezember	10,160	22,848	27,129	23,533	3,856	0	227,435	139,017	129	2,725	13,447	7,566
Total	197,564	220,121	392,180	384,245	18,452	795	2,756,555	1,736,805	25,143	19,126	227,203	185,614
Zufuhr	Steine, Erden, Baust. GRUPPE 6		Düngemittel GRUPPE 7		Chemische Erzeugnisse GRUPPE 8		Fahrzeuge, Maschinen GRUPPE 9		Übrige Güter GRUPPE 99		Totalverkehr	
	2019	2018	2019	2018	2019	2018	2019	2018	2019	2018	2019	2018
Januar	46,575	30,042	15,254	7,000	19,215	16,545	10,595	12,438	14,148	13,267	365,779	337,815
Februar	61,749	64,972	7,033	10,610	22,438	11,439	9,668	12,449	11,901	13,508	437,789	402,399
März	51,209	66,048	16,002	6,938	24,048	13,252	7,671	11,995	8,070	14,048	450,460	308,184
April	73,235	82,096	8,543	3,471	19,910	19,434	7,312	9,698	11,391	13,279	389,291	429,206
Mai	84,353	80,349	5,934	6,624	47,122	15,954	8,327	10,640	12,496	16,009	518,465	402,295
Juni	76,086	75,168	13,411	11,615	35,060	22,118	8,524	11,985	11,876	13,149	520,928	374,660
Juli	87,501	67,878	12,735	10,815	10,370	15,254	10,330	9,425	12,207	13,386	510,654	367,835
August	68,902	56,429	18,403	10,815	20,870	12,616	10,036	8,979	11,169	12,130	423,582	244,776
September	70,058	54,566	15,579	11,700	24,023	8,782	9,235	6,840	11,257	9,180	347,421	238,505
Oktober	69,411	57,867	12,941	5,445	18,410	6,632	8,654	5,207	11,430	7,660	379,706	219,948
November	54,178	50,243	15,512	7,898	10,669	3,163	9,000	1,574	10,721	4,386	353,623	180,404
Dezember	45,914	42,020	4,140	9,806	6,395	5,806	8,552	2,282	9,204	6,815	356,361	262,418
Total	789,171	727,678	145,487	102,737	258,530	150,995	107,904	103,512	135,870	136,817	5,054,059	3,768,445
Zusammenfassung Januar - Dezember												
Total Zufuhr 2019			5,054,059		Total Abfuhr 2019		1,011,175		Totalverkehr 2019		6,065,234	
Total Zufuhr 2018			3,768,445		Total Abfuhr 2018		929,536		Totalverkehr 2018		4,697,981	
+/- zum Vergleich in %			25.44		+/- zum Vorjahr in %		8.07		+/- zum Vergleich in %		22.54	